

Date: Tuesday, August 25, 2015

Re: Addendum No.1
RFP 666-15 Dillon Campus Reroof

Project: Colorado Mountain College
Dillon Roof Renovation
3000 County Road 114
Dillon, CO 80435

Drawings Issued: August 10, 2015

To: All Pre-qualified bidders

From: Johnson Carter Architects, PC
136 East 3rd Street
Rifle, CO 81650
(970) 625-0580 * (970) 625-0581 fax

Instructions to Bidders:

This Addendum forms part of and modifies Bidding and Contract Documents for the project named above. Where any original item called for in the Project Manual or indicated on the Drawings is supplemented by this addendum, the supplemental requirements shall supersede the previous item. Where any original item is amended, voided, or superseded hereby, the other provisions of such items not specifically amended, voided, or superseded shall remain in effect.

Acknowledgement of this Addendum #1 on the Bid Form is required.

1. Clarification:

Bid and Performance Bond:

No Bid Bond is required.

Performance and Payment Bonds are required if the project bid is over \$50,000.00.

Refer to Section V: Terms & Conditions, Paragraph M of the Request for Proposal.

2. Clarification:

Staging:

Dumpster location for debris removal, on-site storage of materials, and kettle location shall be limited to two parking stalls directly West of the handicap stall on the South side of the building.

3. Clarification:

Asphaltic Additive:

Provide low odor asphaltic additive in accordance with Specifications.

Base of Performance per attached MSDS from United Asphalts.

4. Addition:

Roofing Tiles:

General Contractors shall provide a unit bid cost to replace damaged or missing ceramic roofing tiles surrounding perimeter of building roof parapets. For general estimating purposes assume replacing a dozen tiles. Matching tiles will be provided by the Owner. Unit bid cost per tile shall be separately listed in your bid.

5. Addition:

Flashing Detail:

Refer to attached "Supplemental Details: RFP 666-15" for an additional flashing detail at the roofing condition where the North Elevator shaft wall intersects the roofing plane; and along the associated perimeter of the main rooftop unit. Referenced on "Addendum Roof Plan Drawing".

6. Addition:

Elevator Shaft Parapet Cap:

General Contractor Bid shall include replacing elevator shaft parapet wall coping cap. Cap shall comply with Specification Section 07425 Coping Cap. Referenced on "Addendum Roof Plan Drawing".

7. Addition:

Jack Boot at Conduit:

General Contractor Bid shall include manufacturer approved flexible jack boots where two 4" flexible electrical conduit lines intersect the main rooftop unit. The boots would be installed in a horizontal orientation. Referenced on "Addendum Roof Plan Drawing".

8. Clarification:

Curb Size:

General Contractor Bid shall include labor and materials to raise curb height of rooftop equipment and exhaust where necessary to maintain manufacturer approved minimum vertical height after adding supplemental rigid insulation.

9. Addition / Deletion:

Removal of unused penetrations:

General Contractor shall remove curbing / pipe jacks from abandoned mechanical roofing penetrations and continue roof assembly over these covered openings. Referenced on "Addendum Roof Plan Drawing".

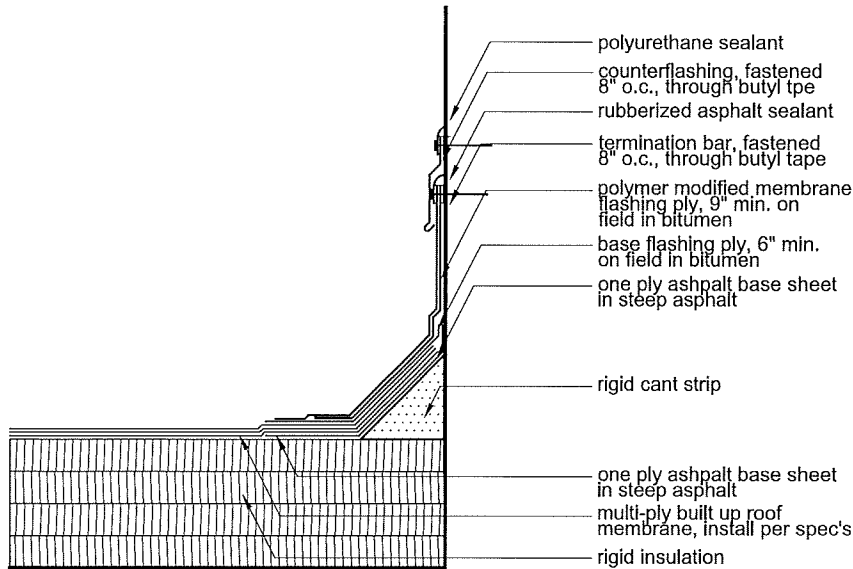
10. Addition:

Parapet Wall Height Extension:

Refer to attached "Supplemental Details: RFP 666-15" for a detail showing an extension to the height of the existing parapet wall as indicated. Referenced on "Addendum Roof Plan Drawing".

END OF ADDENDUM

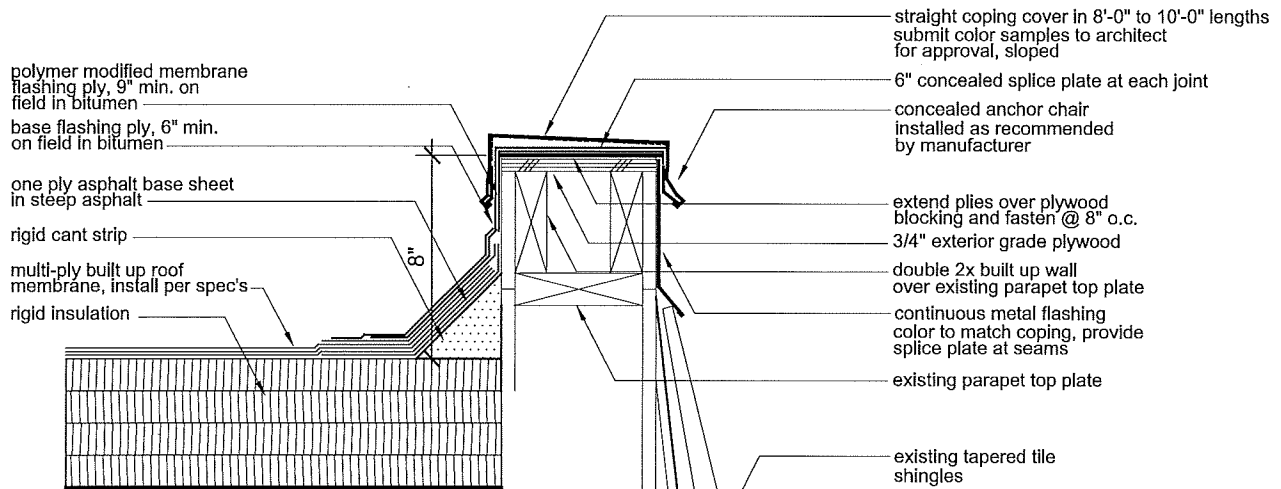
- Att. MSDS from United Asphalts
 Supplemental Details: RFP 666-15
 Addendum Roof Plan Drawing



A
add1

Flashing Detail

scale: 1 1/2" = 1'-0"



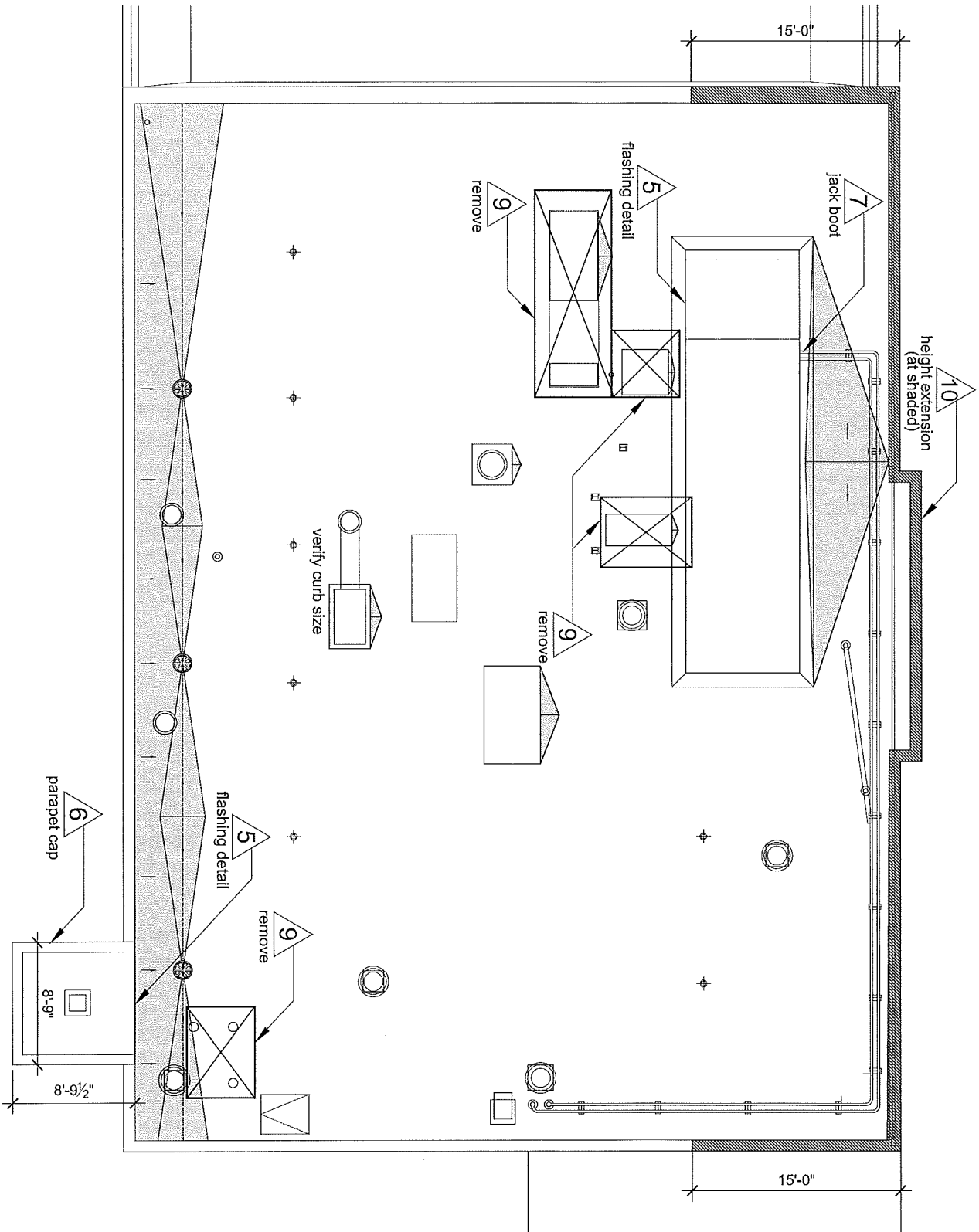
B
add1

Parapet Extension

scale: 1 1/2" = 1'-0"

**Supplemental Details: RFP 666-15
Dillon Building Roof Renovation**





Addendum Roof Plan Drawing Dillon Building Roof Renovation





MATERIAL SAFETY DATA SHEET

DATE OF DATA SHEET: 11/01/2005

TRADE NAME: Roofing Asphalt / NO SMELL Asphalt

CHEMICAL FAMILY: ASPHALT

UNITED ASPHALTS

Mailing Address:

P.O. Box 1034

Commerce City, CO 80022

Plant Address:

4306 E. 60th Avenue

Commerce City, CO 80022

Health & Technical Contact:

(800) 466-5431 / (303) 287-5431 Fax

PREPARED ACCORDING TO OSHA HAZARD COMMUNICATION STANDARD (29 CFR 1910.100), FORMERLY CALLED MATERIAL INFORMATION BULLETIN.

CAUTION: HOT ASPHALT MAY EMIT TOXIC HYDROGEN SULFIDE GAS (H₂S). PROLONGED OR REPEATED CONTACT WITH SKIN COULD BE HARMFUL. KEEP OUT OF REACH OF CHILDREN.

TYPICAL COMPOSITION: OXIDIZED ASPHALT (CAS 64/42-93-4)

EXPOSURE STANDARD: THE ACGIH (1985-86) TLV FOR PETROLEUM ASPHALT FUMES IS 5MG/M³ FOR A DAILY 8-HOUR EXPOSURE. THIS IS NOT A FEDERAL OSHA EXPOSURE STANDARD FOR ASPHALT FUMES. THE FEDERAL OSHA EXPOSURE STANDARD FOR HYDROGEN SULFIDE (H₂S) IS 20 PPM (A CEILING VALUE). IT MAY BE EXCEEDED (UP TO 50 PPM) FOR 10 MINUTES IN ANY 8-HOUR PERIOD IN, WHICH NO OTHER MEASURABLE EXPOSURE OCCURS. THE ACGIH (1985-86) TLV IS 10 PPM (8-HOUR TIME WEIGHTED AVERAGE).

SECTION 1: PHYSIOLOGICAL & HEALTH EFFECTS

EYES: THE COOL SOLID MATERIAL IS NOT EXPECTED TO CAUSE EYE IRRITATION. THERMAL BURNS MAY RESULT FROM CONTACT WITH HOT MATERIAL. FUMES MAY CAUSE IRRITATION, REDNESS, OR BLURRED VISION.

SKIN: THE COOL SOLID MATERIAL IS NOT EXPECTED TO CAUSE SKIN IRRITATION. THERMAL BURNS MAY RESULT FROM CONTACT WITH HOT MATERIAL. LONG-TERM SKIN EXPOSURE TO ASPHALT CAN INCREASE SENSITIVITY TO THE SUN, AND MAY CAUSE DISCOLORATION.

INHALATION: FUMES FROM THE HOT MATERIAL CAN BE UNPLEASANT AND MAY PRODUCE NAUSEA AND IRRITATION OF THE UPPER RESPIRATORY TRACT. BREATHING (H₂S) MAY BE HAZARDOUS: SEE ADDITIONAL DATA. BASED ON A 2000 REVIEW OF HEALTH



EFFECTS LITERATURE, NIOSH CONCLUDED THAT ROOFING ASPHALT FUMES ARE A POTENTIAL OCCUPATIONAL CARCINOGEN.

INGESTION: ASPHALT MAY BE HARMFUL OR CAUSE DEATH IF SWALLOWED, MAY CAUSE DIZZINES, INCOORDINATION, HEADACHE, NAUSEA, AND VOMITING.

SECTION 2: EMERGENCY & FIRST AID PROCEDURES

EYES: IF THE HOT MATERIAL SHOULD SPLASH INTO THE EYES, FLUSH EYES IMMEDIATELY WITH FRESH WATER WHILE HOLDING EYELIDS OPEN. SEE A DOCTOR.

SKIN: IF THE HOT MATERIAL GETS ON SKIN, QUICKLY COOL IN WATER. SEE A DOCTOR FOR EXTENSIVE BURNS. DO NOT TRY TO PEEL THE SOLIDIFIED MATERIAL FROM THE SKIN OR USE SOLVENTS OR THINNERS TO DISSOLVE IT. THE USE OF VEGETABLE OIL OR MINERAL OIL IS RECOMMENDED FOR REMOVAL OF THIS MATERIAL FROM THE SKIN.

INHALATION: IF THERE ARE SIGNS OR SYMPTOMS AS DESCRIBED IN THIS MSDS DUE TO BREATHING THIS MATERIAL, MOVE THE PERSON TO FRESH AIR. IF THE BREATHING HAS STOPPED, APPLY ARTIFICIAL RESPIRATION (CPR). CALL A DOCTOR.

INGESTION: DO NOT INDUCE VOMITING. PREVENT ASPIRATION OF ASPHALT INTO LUNGS. SEEK IMMEDIATE MEDICAL ATTENTION.

SECTION 3: SPECIAL PROTECTIVE INFORMATION

EYE PROTECTION: DO NOT GET HOT MATERIAL IN EYES. EYE CONTACT CAN BE AVOIDED BY WEARING CHEMICAL SAFETY GOGGLES OR A FACE SHIELD.

SKIN PROTECTION: AVOID SKIN CONTACT WITH HOT MATERIAL BY WEARING PROTECTIVE CLOTHING INCLUDING GLOVES, LOOSE-FITTING LONG-SLEEVED SHIRT AND LONG PANTS.

RESPIRATORY PROTECTION: NO SPECIAL RESPIRATORY PROTECTION IS NORMALLY REQUIRED. HOWEVER, IF OPERATING CONDITIONS CREATE AIRBORNE CONCENTRATIONS, WHICH EXCEED THE EXPOSURE STANDARD, THE USE OF AN APPROVED RESPIRATOR IS RECOMMENDED. NOTE: IF ANY OF THE APPLICABLE (H2S) STANDARDS ARE LIKELY TO BE EXCEEDED, POSITIVE SUPPLIED –AIR RESPIRATORY PROTECTION MUST BE USED.

VENTILATION: USE THIS MATERIAL ONLY IN WELL-VENTILATED AREAS.



SECTION 4: FIRE PROTECTION

FLASH POINT: (COC) 450 F (MIN)

AUTO-IGNITION TEMP: 700 F (APPROXIMATELY)

FLAMMABILITY LIMITS: N/A

EXTINGUISHING MEDIA: CO₂, DRY CHEMICAL, FOAM, WATER FOG, HALON.
SPECIAL FIRE FIGHTING PROCEDURES: FOR FIRES INVOLVING THIS MATERIAL, DO NOT ENTER ANY ENCLOSED OR CONFINED FIRE SPACE WITHOUT PROPER PROTECTIVE EQUIPMENT, INCLUDING SELF-CONTAINED BREATHING APPARATUS. SEE HAZARDOUS DECOMPOSITION PRODUCTS.

SECTION 5: ENVIRONMENTAL PROTECTION

ENVIRONMENTAL IMPACT: THIS MATERIAL IS NOT EXPECTED TO PRESENT ANY ENVIRONMENTAL PROBLEMS.

PRECAUTIONS IF MATERIAL IS RELEASED OR SPILLED: IF LIQUID MATERIAL IS SPILLED, ALLOW IT TO COOL AND SOLIDIFY BEFORE PROCEEDING WITH DISPOSAL METHODS. CLEAN UP SPILLS IMMEDIATELY, OBSERVING PRECAUTIONS IN SPECIAL PROTECTIVE INFORMATION AND ON PRODUCT LABEL.

WASTE DISPOSAL METHODS: PLACE CONTAMINATED MATERIALS IN DISPOSABLE CONTAINERS AND DISPOSE OF IN A MANNER CONSISTENT WITH APPLICABLE REGULATIONS. CONTACT LOCAL ENVIRONMENTAL OR HEALTH AUTHORITIES FOR APPROVED DISPOSAL OF THIS MATERIAL.

SECTION 6: SPECIAL PRECAUTIONS

DO NOT USE OR STORE NEAR FLAMES, SPARKS OR HOT SURFACES. USE ONLY IN WELL VENTILATED AREA. KEEP CONTAINER CLOSED.

TOXIC QUANTITIES OF HYDROGEN SULFIDE (H₂S) MAY BE PRESENT IN STORAGE TANKS AND BULK TRANSPORT VESSELS WHICH CONTAIN OR HAVE CONTAINED HOT ASPHALT. PERSONS OPENING OR ENTERING THESE COMPARTMENTS SHOULD FIRST DETERMINE IF



(H₂S) IS PRESENT. SEE SPECIAL PROTECTIVE INFORMATION. DO NOT ATTEMPT TO RESCUE WITHOUT WEARING SUPPLIED-AIR OR SELF-CONTAINED BREATHING EQUIPMENT.

DO NOT ADD OR ALLOW WATER TO MIX WITH HOT ASPHALT. STEAM GENERATED ERUPTIONS MAY OCCUR. YOU SHOULD STORE AND TRANSPORT ASPHALT ONLY IN PROPERLY VENTED CONTAINERS. COMBUSTION OF ASPHALT AND ASPHALT VAPORS MAY OCCUR. DO NOT MISHANDLE ASPHALT EQUIPMENT. OBSERVE MANUFACTURER'S GUIDELINES ON PROPER EQUIPMENT USE.

AN IGNITION SOURCE SHOULD BE CONSIDERED PRESENT IN LARGE TANK WHERE ASPHALT IS STORED AT TEMPERATURES ABOVE 350 F. DEPOSITS CAN FORM IN THE VAPOR SPACE OF LARGE ASPHALT TANKS WHICH MAY IGNITE AS LOW AS 350 F. PYROPHORIC IRON SULFIDE MAY CAUSE IGNITION BELOW 350 F.

SECTION 7: REACTIVITY DATA

STABILITY: (THERMAL, LIGHT, ETC.) STABLE

INCOMPATIBILITY: (MATERIALS TO AVOID) MAY REACT WITH STRONG OXIDIZING MATERIALS.

HAZARDOUS DECOMPOSITION PRODUCTS: NORMAL COMBUSTION FORMS CARBON DIOXIDE AND WATER, AND MAY PRODUCE OXIDES OF SULFUR AND NITROGEN. INCOMPLETE COMBUSTION CAN PRODUCE CARBON MONOXIDE.

HAZARDOUS POLYMERIZATION: WILL NOT OCCUR.

SECTION 8: PHYSICAL & CHEMICAL PROPERTIES

SOLUBILITY: SOLUBLE IN HALOGENATED HYDROCARBONS AND BENZENE; INSOLUBLE IN WATER AND ALCOHOLS.

APPEARANCE: (COLOR, ODOR, ETC.) BROWN/BLACK, SEMI-SOLID WITH LOW ODOR.

BOILING POINT: 650 – 1000+ F (MIN) (IBP)

MELTING POINT: N/A

SPECIFIC GRAVITY: 1.00 – 1.05 @ 15.6/15.6 C



VAPOR PRESSURE: N/A

VAPOR DENSITY: N/A

EVAPORATION: N/A

VISCOSITY: 500 – 1000+ CSI @ 350 F. SOLID AT AMBIENT TEMPERATURE.

SOFTENING POINT: 210 – 225 F TYPES 4
185 – 205 F TYPES 3
158 – 176 F TYPES 2
135 – 151 F TYPES 1

PHYSICAL STATE: SOLID

ADDITIONAL HEALTH DATA

NO ASSOCIATION HAS BEEN ESTABLISHED BETWEEN INDUSTRIAL EXPOSURE TO PETROLEUM ASPHALT AND CANCER IN HUMANS. THE INTERNATIONAL AGENCY FOR RESEARCH ON CANCER (IARC), HAS RECENTLY REVIEWED CARCINOGENIC POTENTIAL OF ASPHALT. THEY CONCLUDED THAT THERE WAS INSUFFICIENT EVIDENCE THAT UNDILUTED, AIR REFINED ASPHALTS WERE CARCINOGENIC TO ANIMALS, WHILE THERE WAS ONLY LIMITED EVIDENCE THAT STEAM-REFINED ASPHALTS WERE CARCINOGENIC TO ANIMALS. ADDITIONALLY, THERE WAS INSUFFICIENT EVIDENCE TO CONCLUDE THAT ASPHALTS WERE CARCINOGENIC TO HUMAN BEINGS. STUDIES IN WHICH MICE WERE EXPOSED TO A VARIETY OF WHOLE ASPHALTS DID NOT RESULT IN ANY INCREASED CANCER RATE; MICE EXPOSED TO ASPHALTS DILUTED WITH HYDROCARBON SOLVENTS HAD INCREASED INCIDENCE OF CERTAIN TYPES OF CANCER. BRIEF OR INTERMITTENT SKIN CONTACT WITH THIS ASPHALT PRODUCT IS NOT LIKELY TO CAUSE CANCER IN HUMANS. SKIN CONTACT AND BREATHING OF MIST, FUMES OR VAPORS SHOULD BE REDUCED TO A MINIMUM. WE STRONGLY RECOMMEND THAT THE PRECAUTIONS OUTLINED IN THIS MSDS BE FOLLOWED WHEN HANDLING THIS MATERIAL.

SOME ASPHALT CONTAINS SULFUR COMPOUNDS, WHICH MAY FORM (H₂S) WHEN HEATED. THE ROTTEN EGGS ODOR OF (H₂S) IS UNRELIABLE AS AN INDICATOR OF CONCENTRATION BECAUSE IT MAY BE ENTIRELY MASKED BY THE ODOR OF THE ASPHALT. SIGNS AND SYMPTOMS OF OVEREXPOSURE TO (H₂S) INCLUDE: RESPIRATORY TRACT IRRITATIONS, HEADACHES, DIZZINESS, NAUSEA, GASTROINTESTINAL DISTURBANCES, COUGHING, A SENSATION OF DRYNESS AND PAIN OF THE NOSE, THROAT AND CHEST, CONFUSION AND UNCONSCIOUSNESS. (H₂S) CONCENTRATIONS OF 1000-2000 PPM CAN BE EXTREMELY HAZARDOUS. DEATH HAS OCCURRED FOLLOWING EXPOSURE TO 600 PPM.