



RFQ 717-16Q Bobcat Toolcat 5600G

Trade In Specifications Issued July 14, 2016

CMC would like to trade our existing Bobcat for a later model. The specifications and some pictures are included in this document. Please see the RFP document for the process for submitting questions and proposals. Thank you.

This Bobcat is available at the Steamboat campus location in the RFQ document for inspection at your discretion. Please call Si Axtell at 970.870.4559 for an appointment. Please do not contact Si or any other college employee with questions, all questions should be submitted via email per the RFQ instructions.

5600) UTILITY WORK MACHINE SPECIFICATIONS (CONT'D)

Performance

Load Capacity		
- Loader Rated Operating Capacity	680 kg (1500 lb)	
- Cargo Box Load (Maximum)	907 kg (2000 lb)	
- Machine Rated Capacity	997 kg (2200 lb)*	
- Trailer Hitch Tongue Weight (Max)	227 kg (500 lb)	
- Total Rated Capacity	1905 kg (4200 lb)**	
	* Combined weight of load on lift arm, cargo box load, operator and passenger. ** Combined weight of the load on lift arm, cargo box load, operator, passenger and tow weight (If equipped with receiver hitch.).	
Tipping Load (SAE Rating)	1361 kg (3000 lb)	
Operating Weight	2579 kg (5685 lb)	
Travel Speed	With 27 Inch Tires	With 29 Inch Tires
- Work Mode (Forward & Reverse)	0 - 13,7 km/h (0 - 8.5 mph)	0 - 14,5 km/h (0 - 9 mph)
- Low Range (Forward & Reverse)	0 - 13,7 km/h (0 - 8.5 mph)	0 - 14,5 km/h (0 - 9 mph)
- High Range (Forward Only)	0 - 27,4 km/h (0 - 17 mph)	0 - 29 km/h (0 - 18 mph)

Controls

Vehicle Steering	Steering Wheel
Utility Work Machine Hydraulics - Lift and Tilt - Front Auxiliary	Joystick Switch on Joystick
Engine	Hand lever engine speed control; key-type starter switch (or optional keyless start).
Starting Aid	Glow Plugs automatically activated as needed.
Service Brake	Hydrostatic transmission system controlled by foot pedal.
Parking Brake (Std.)	Spring Applied Pressure Release (SAPR) activated by the park position of the travel direction control lever or automatically when engine is stopped.

Engine

Make/Model	Kubota V2607-OI-TE3B-BC-3 (Turbo Charged)
Fuel/Cooling	Diesel / Liquid
Horsepower	
- ISO 9249 / SAE J1349 Net	43,3 kW (58.0 hp) @ 2700 rpm
- ISO 14396 Gross	43,33 kW (58.1 hp) @ 2700 rpm
- SAE J1349 Gross	45,5 kW (61.0 hp) @ 2700 rpm
Torque	
- ISO 9249 / SAE J1349 Net	193,9 N·m (143.0 ft-lb) @ 1600 rpm
- SAE J1349 Gross	200,7 N·m (148.0 ft-lb) @ 1600 rpm
Low Idle rpm	1175 - 1325 rpm
High Idle rpm	2760 - 2900 rpm
Number of Cylinders	4
Displacement	2,6 L (158.7 in ³)
Bore/Stroke	87,0 mm / 110,0 mm (3.425 / 4.33 in)
Lubrication	Gear Pump Pressure System with Filter
Crankcase Ventilation	Closed Breathing
Air Cleaner	Replaceable dry paper cartridge with separate safety element
Ignition	Compression
Engine Coolant	Propylene Glycol / Water Mixture
Starting Aid	Glow Plugs



(5600) UTILITY WORK MACHINE SPECIFICATIONS (CONT'D)**Drive System**

Main Drive	Fully hydrostatic, 4-wheel drive
Transmission	Infinitely variable tandem hydrostatic piston pumps, driving two fully reversing hydrostatic motors
Final Drive	Front and rear transaxles
Wheel Bolts	Eight 12 mm wheel bolts fixed to axle hubs
Transaxle	Provided both front and rear
Transaxle Lubricant (Front & Rear)	Transaxle Housing Lubricant (P/N 6687120)

Capacities

Fuel Tank	75,7 L (20 U.S. gal)
Engine Lubrication & Filter	7,6 L (8.0 qt)
Engine Cooling System	11,4 L (12 qt)
Hydraulic/Hydrostatic Reservoir	14 L (14.8 qt) @ Sight Glass
Hydraulic/Hydrostatic System	39,7 L (10.5 U.S. gal)
Transaxle (Front & Rear)	5,2 L (5.54 qt) each

Tires

Sizes - Trac - Turf	27 x 8.5 -15, 27 x 10.5 -15, 29 x 10.5 - 15 27 x 10.5 -15, 29 x 12.5 - 15
Recommended Pressure	Inflate tires to MAXIMUM pressure shown on the side wall of the tire. DO NOT mix brands of tires used on the same machine.

(5600) UTILITY WORK MACHINE SPECIFICATIONS (CONT'D)

Hydraulic System

Pump Type	Engine driven, gear type
Pump Capacity <ul style="list-style-type: none">- Auxiliary- With High Flow Option- Work- Steering	71,4 L/min (18.9 U.S. gpm) 105,7 L/min (27.9 U.S. gpm) 34,4 L/min (9.1 U.S. gpm) 22,9 L/min (6.0 U.S. gpm)
System Relief at Quick Couplers	20,7 MPa (206,8 bar) (3000 psi)
Filter (Hydraulic)	Full flow replaceable, 10-micron synthetic media element with 317 kPa (3,17 bar) (46 psi) internal cold-weather bypass valve.
Hydraulic Cylinders	Double-acting; tilt cylinders have cushioning feature on dump and rollback
Bore Diameter <ul style="list-style-type: none">- Lift Cylinder- Tilt Cylinder- Cargo Box Cylinder (2)	63,5 mm (2.5 in) 63,5 mm (2.5 in) 50,8 mm (2.0 in)
Rod Diameter <ul style="list-style-type: none">- Lift Cylinder- Tilt Cylinder- Cargo Box Cylinder (2)	38,1 mm (1.5 in) 38,1mm (1.5 in) 25,4 mm (1.0 in)
Stroke <ul style="list-style-type: none">- Lift Cylinder- Tilt Cylinder- Cargo Box Cylinder (2)	581,4 mm (22.89 in) 415,0 mm (16.34 in) 159,5 mm (6.28 in)
Control Valve	Manually operated, open center, series type with float detent on lift
Fluid Type (Hydraulic/Hydrostatic)	FLUID, Hydraulic/Hydrostatic 6903117 - (2.5 U.S. gal) 6903118 - (5 U.S. gal) 6903119 - (55 U.S. gal)

Electrical

Alternator	Belt driven, 90 amps, open
Battery	12 volts, 600 cold cranking amps @ -18 °C (0 °F), 115 minute reserve capacity
Starter	12 volts, gear reduction type, 2,99 kW (4.02 hp)
Instrumentation	<p>Gauges: Engine Coolant Temperature, Fuel Gauge</p> <p>Screen Display: Diagnostic Codes, Hourmeter, Job Clock (resetable), Speedometer, Tachometer.</p> <p>Warning lights (Red): Fuel Level, General Warning, High Hyd. Temperature, Lift Arm and Tilt Transport Lock, Low Engine Oil Pressure, Low Battery Voltage, Parking Brake.</p> <p>Indicator Lights (Amber): Auxiliary Hyd. Enabled, Cruise Control Engaged reminder, Glow Plugs Activated, Return to Park reminder, Two-Speed engaged reminder, Work Mode indicator.</p> <p>Buttons: Auxiliary Hydraulics, Cruise Control, Decelerate, Accelerate, Display (speed, hours, rpm), Lift Arm and Tilt Transport Lock, Lights, Parking Brake, Work Mode.</p>



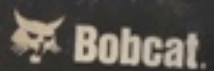




5600

Bobcat

4x4



WORK MACHINE
MODEL

5600

A94Y11998

PRODUCT
IDENTIFICATION
NUMBER



MADE IN USA

2012

MODEL
YEAR

Bobcat Company
West Fargo, ND 58078 USA
www.bobcat.com

