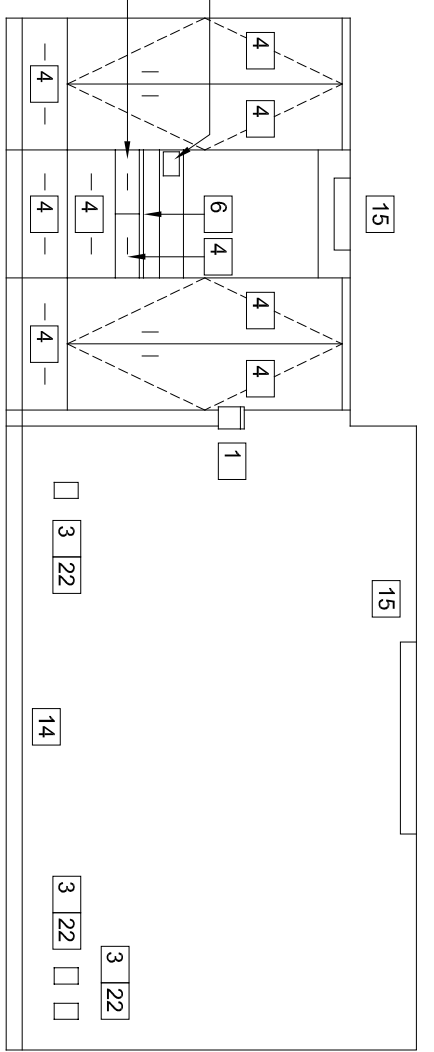
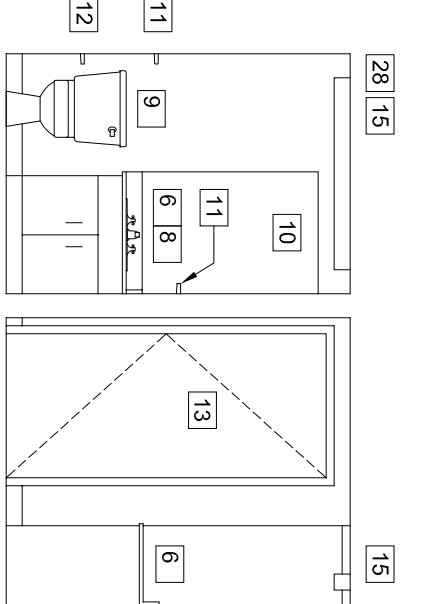


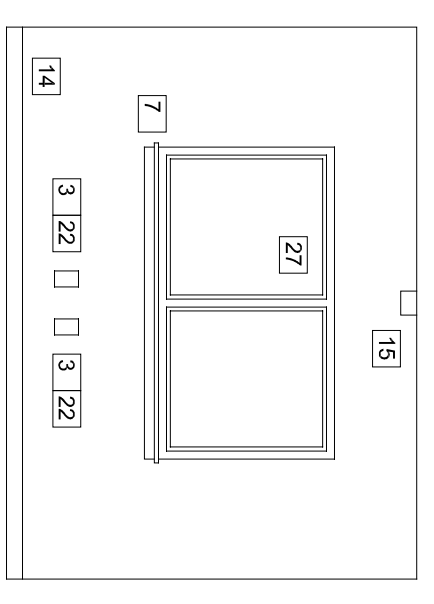
01 Interior Elev
DEM1 scale: 1/4" = 1'-0"



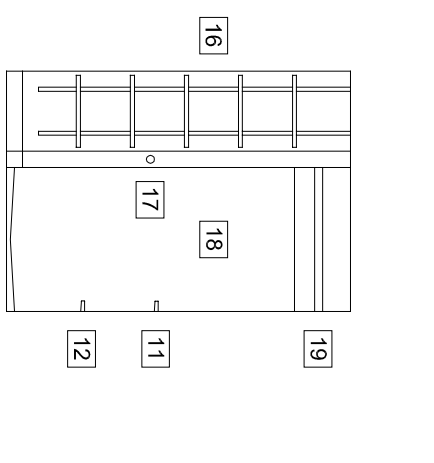
02 Interior Elev
DEM1 scale: 1/4" = 1'-0"



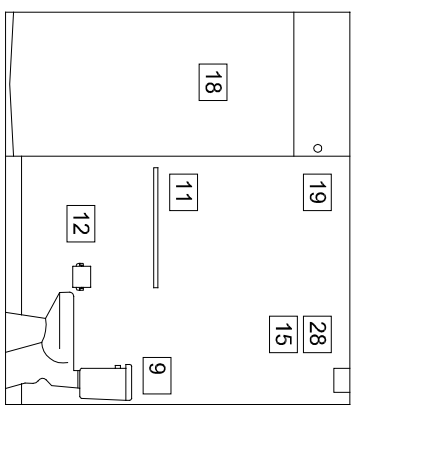
03 Interior Elev
DEM1 scale: 1/4" = 1'-0"



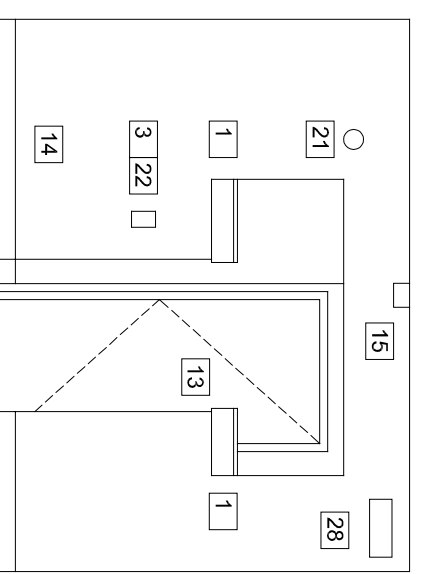
04 Interior Elev
DEM1 scale: 1/4" = 1'-0"



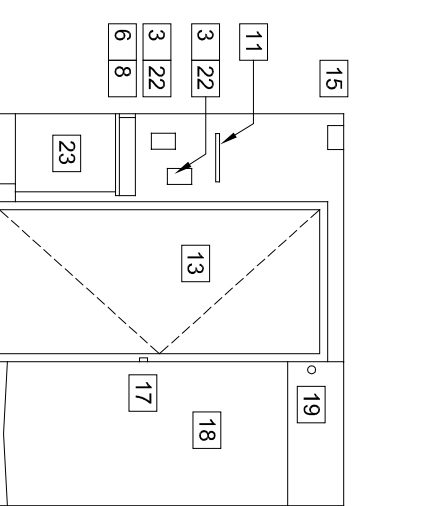
05 Interior Elev
DEM1 scale: 1/4" = 1'-0"



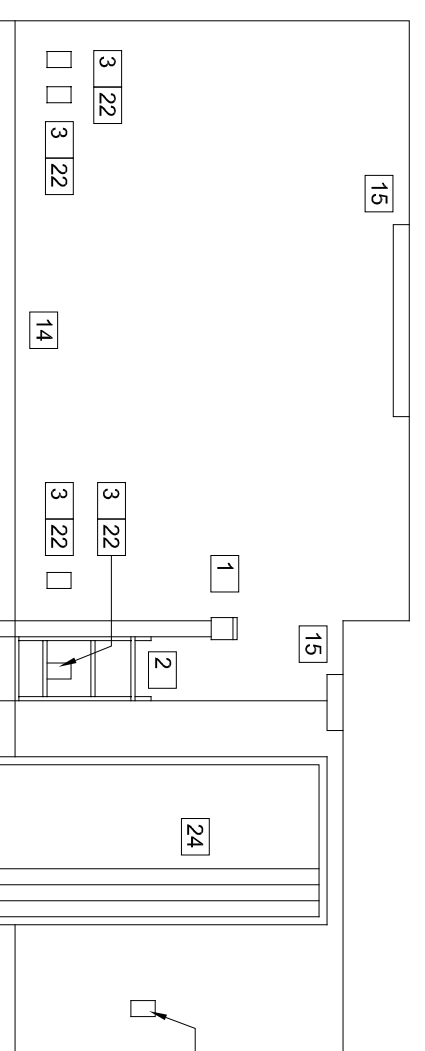
06 Interior Elev
DEM1 scale: 1/4" = 1'-0"



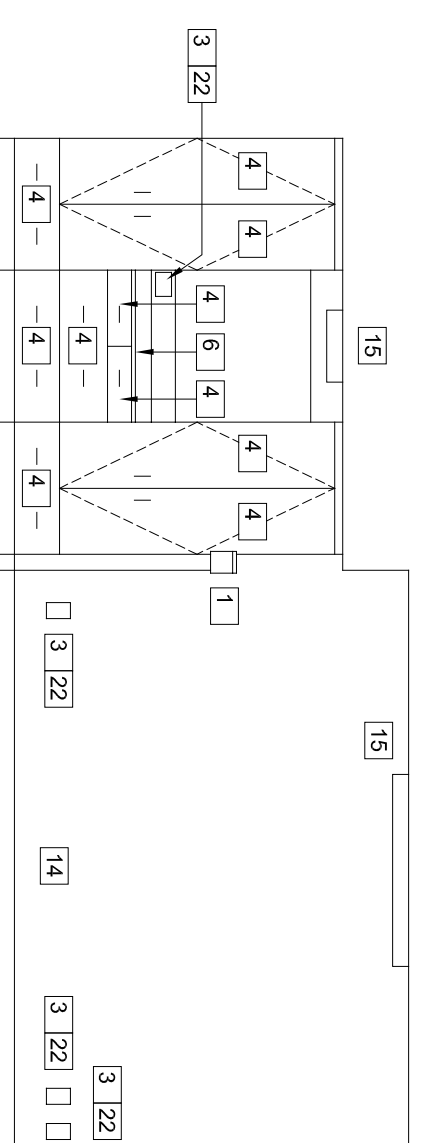
07 Interior Elev
DEM1 scale: 1/4" = 1'-0"



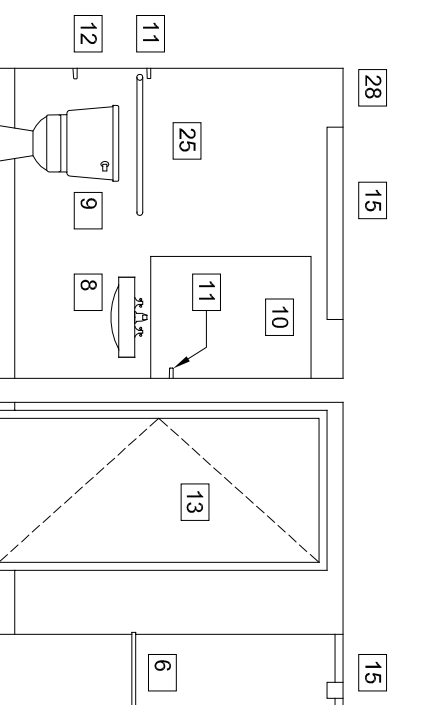
08 Interior Elev
DEM1 scale: 1/4" = 1'-0"



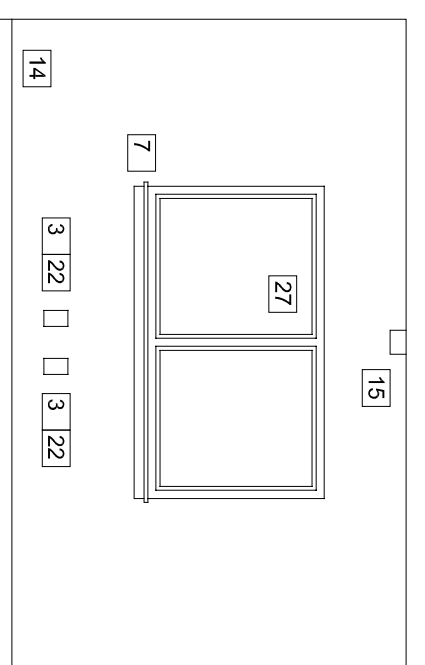
09 Interior Elev
DEM1 scale: 1/4" = 1'-0"



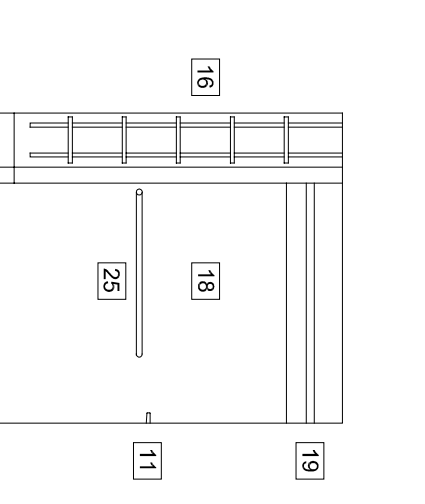
10 Interior Elev
DEM1 scale: 1/4" = 1'-0"



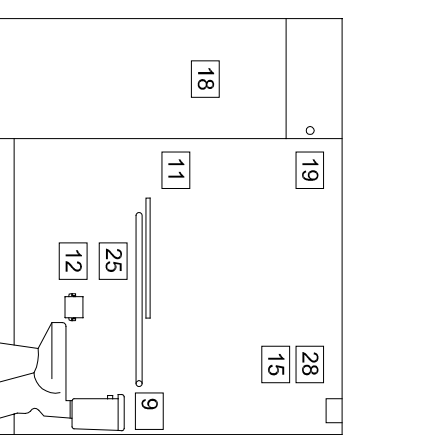
11 Interior Elev
DEM1 scale: 1/4" = 1'-0"



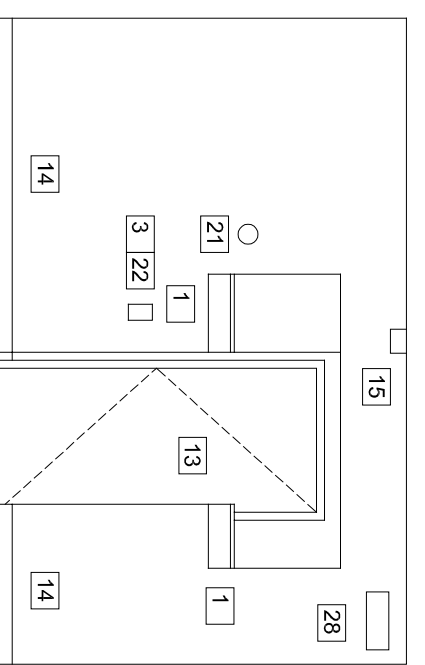
12 Interior Elev
DEM1 scale: 1/4" = 1'-0"



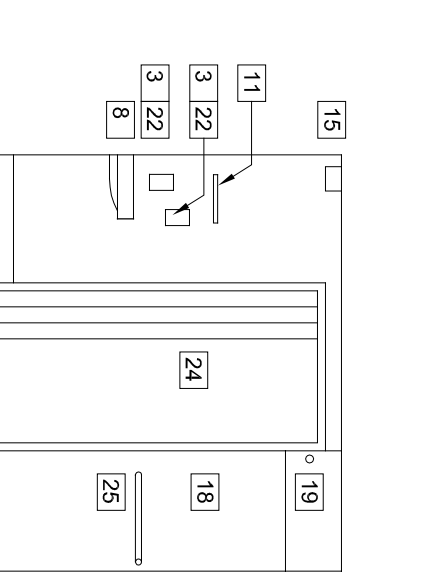
13 Interior Elev
DEM1 scale: 1/4" = 1'-0"



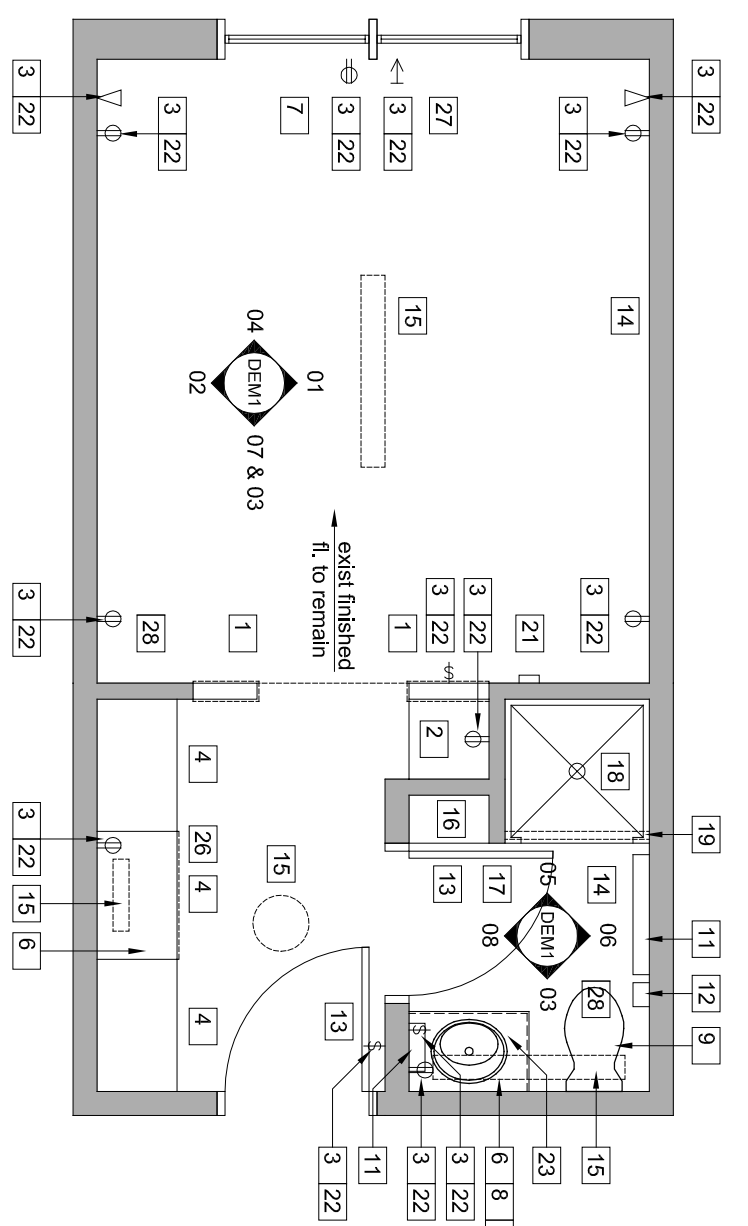
14 Interior Elev
DEM1 scale: 1/4" = 1'-0"



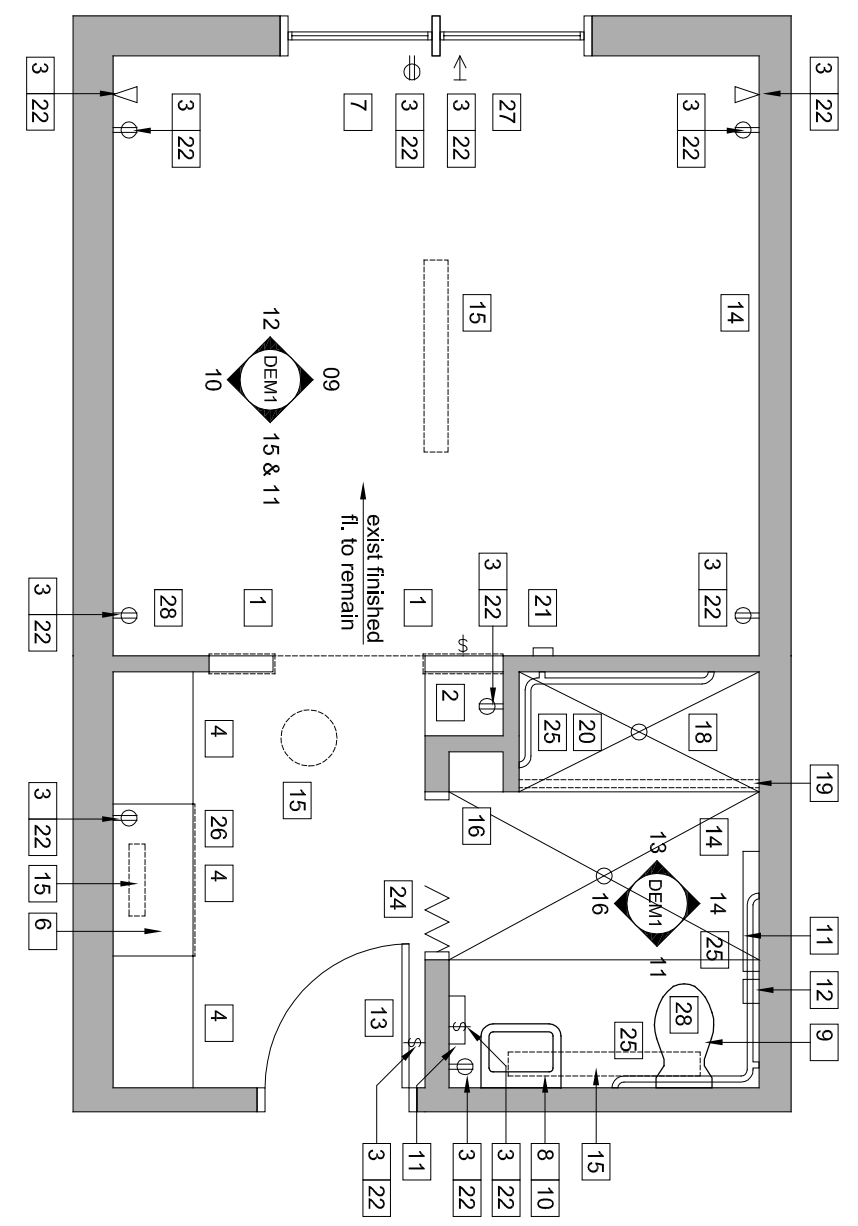
15 Interior Elev
DEM1 scale: 1/4" = 1'-0"



16 Interior Elev
DEM1 scale: 1/4" = 1'-0"

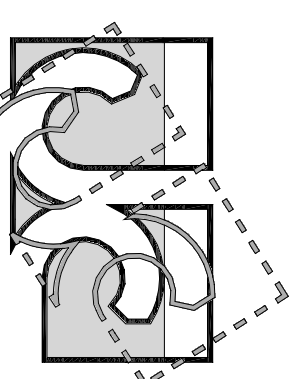


17 Standard Demolition Plan
DEM1 scale: 1/4" = 1'-0"



18 ADA Unit Demolition Plan
DEM1 scale: 1/4" = 1'-0"

- DEMOLITION NOTES**
- 1 Remove wall cap and trim
 - 2 Remove entire shelving system
 - 3 Remove all electrical device wall plates
 - 4 Remove existing cabinet doors and drawer doors (exposed face panel only at drawers).
 - 5 Not used
 - 6 Remove countertop and backsplash
 - 7 Remove window sill and trim
 - 8 Remove existing sink and faucet
 - 9 Remove existing toilet
 - 10 Remove mirror
 - 11 Remove wall mounted towel bars
 - 12 Remove wall mounted toilet paper holder
 - 13 Remove existing door hardware
 - 14 Remove wall base
 - 15 Remove existing light fixtures
 - 16 Remove existing shelves, brackets and standards
 - 17 Remove wall mounted door stop
 - 18 Remove existing 3-sided shower insert
 - 19 Remove shower rod
 - 20 Remove existing shower faucet & valve
 - 21 Remove existing thermostat
 - 22 Remove existing wall electric boxes
 - 23 Remove existing vanity cabinet
 - 24 Remove accordion style door and frame
 - 25 Remove existing grab bars
 - 26 Remove existing drawer slides
 - 27 Remove existing window shades
 - 28 Remove existing HVAC grill



Jeff Johnson
Architectural PC
136 East Third Street
Rifle, CO 81650
970-625-0580
jjarch@protonet
Copyright 2017

Colorado Mountain College

Residence Hall Remodels

Construction
Demolition: Interior Elevations & Unit Plans

Date: 03-09-17
1612D-03-09-17

DEM1