



## **RFP #822-18 Professional Custodial Services**

---

**Addendum 001  
Issued November 2, 2018**

**1. What tasks does the in-house cleaning staff perform in Aspen?**

**The in-house staff performs the following:**

- **Check and clean bathrooms as needed and fill paper.**
- **Check daily room schedule to see if classroom set up or cleaning is needed.**
- **Do laundry.**
- **Clean hallways and bathroom floors with Saber.**
- **Sweep and clean all stairs.**
- **Clean floors in bathrooms and in ceramics room.**
- **Vacuum room perimeter of 228 and clean mirrors. Buff floor 2 times a month.**
- **Clean floor in bathrooms and ceramics room.**
- **Take out office trash.**

**2. Please provide blueprints of each building.**

**Attached.**

**3. Who provides the cleaning equipment – vacuums, mops, buckets, etc.?**

**Vendor**

**4. Who provides the rags?**

**Vendor**

**5. Can vendor provide their own supplies that their employees are trained to use?**

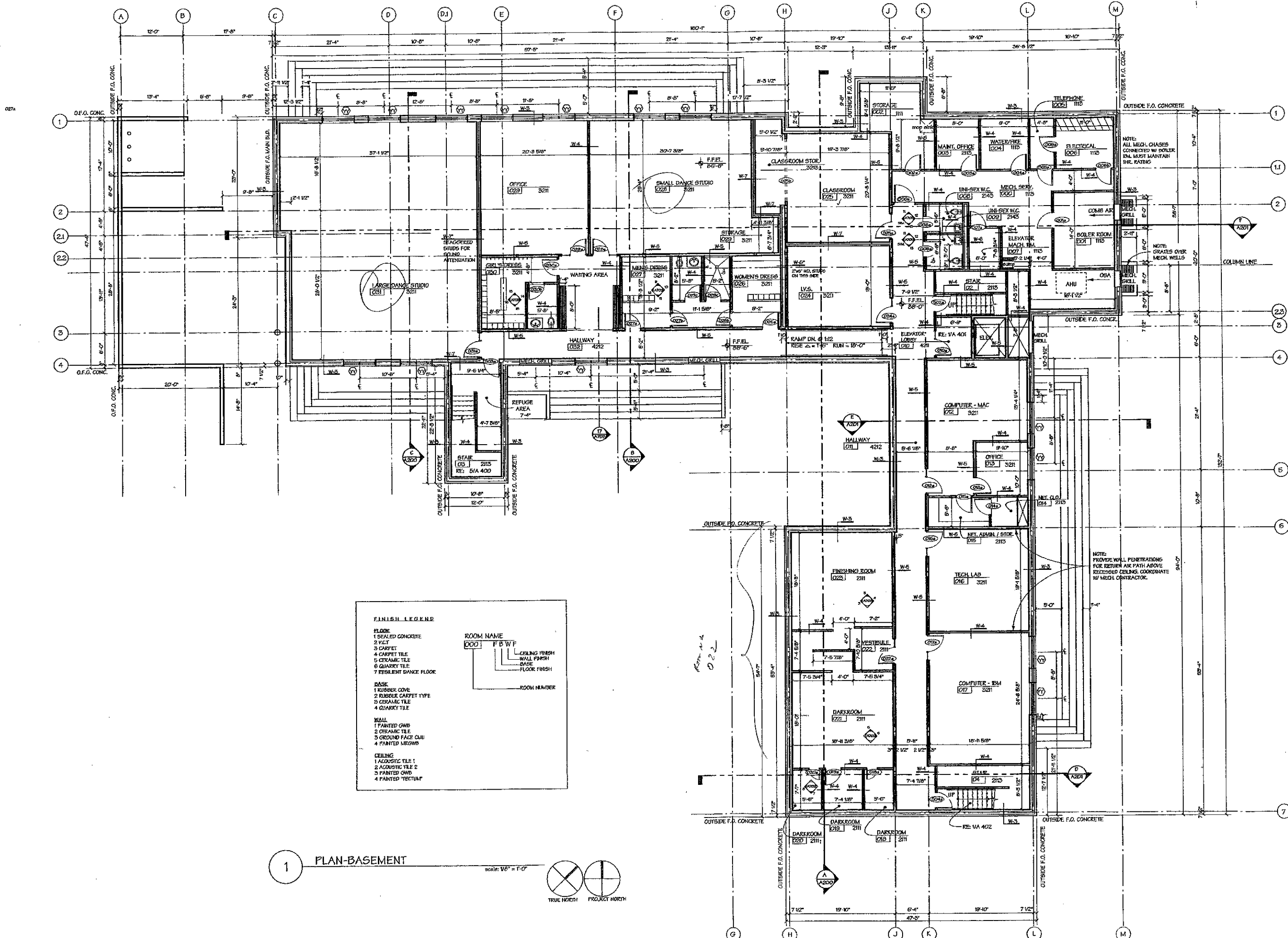
**Yes**

**6. What services are performed for Aspen Santa Fe Ballet?**

**Please price cleaning the same scope of services for the Aspen Santa Fe Ballet. Provide an add/alternate for also cleaning the bathrooms (stocking and cleaning all surfaces), emptying trash, and floors.**

**7. Does the contractor clean smartboards or just whiteboards?**

**Just whiteboards**



**FINISH LEGEND**

**FLOOR**

- 1 SEALED CONCRETE
- 2 V.C.T
- 3 CARPET
- 4 CARPET TILE
- 5 CERAMIC TILE
- 6 QUARRY TILE
- 7 RESILIENT DANCE FLOOR

**BASE**

- 1 RUBBER COVE
- 2 RUBBER CARPET TYPE
- 3 CERAMIC TILE
- 4 QUARRY TILE

**WALL**

- 1 PAINTED GWB
- 2 CERAMIC TILE
- 3 GROUND FACE CMU
- 4 PAINTED MRGB

**CEILING**

- 1 ACOUSTIC TILE 1
- 2 ACOUSTIC TILE 2
- 3 PAINTED GWB
- 4 PAINTED TECTUM

**ROOM NAME**

- OOO
- F B W F
- CEILING FINISH
- WALL FINISH
- BASE
- FLOOR FINISH

**ROOM NUMBER**

1 PLAN-BASEMENT

scale: 1/8" = 1'-0"

TRUE NORTH PROJECT NORTH

HARRY TEAGUE ARCHITECTS

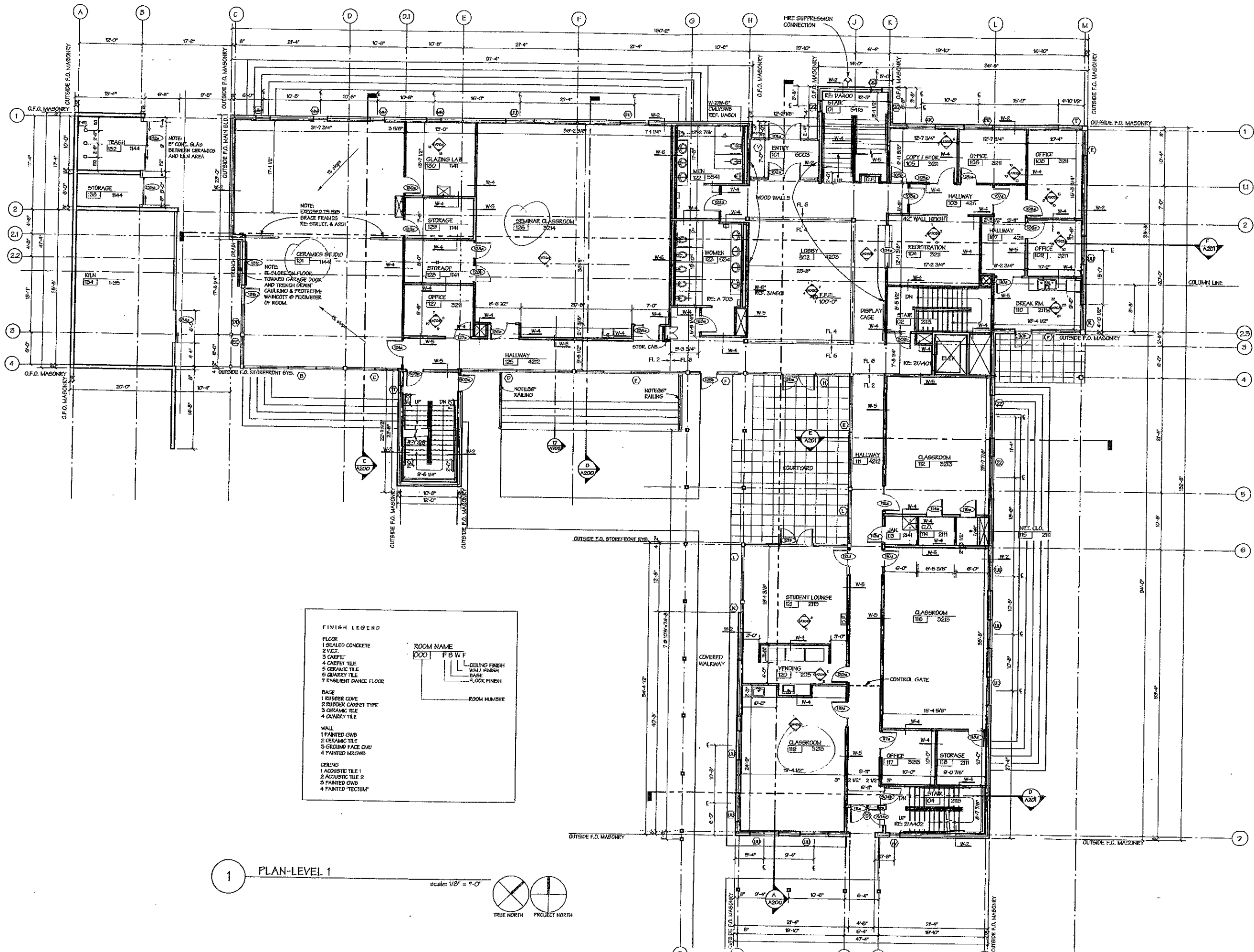
**CMC ASPEN**  
North Forty P.U.D. - Aspen, Colorado

RECEIVED  
CCT 25 1989  
B & H

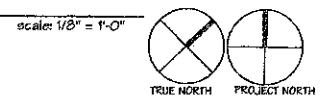
PLAN-BASEMENT

10/18/88	BD SET
5/7/89	REV CD
8/16/89	CHECK SET

A 100



1 PLAN-LEVEL 1



HARRY TEAGUE ARCHITECTS

CMC ASPEN  
North Forty P.U.D. - Aspen, Colorado

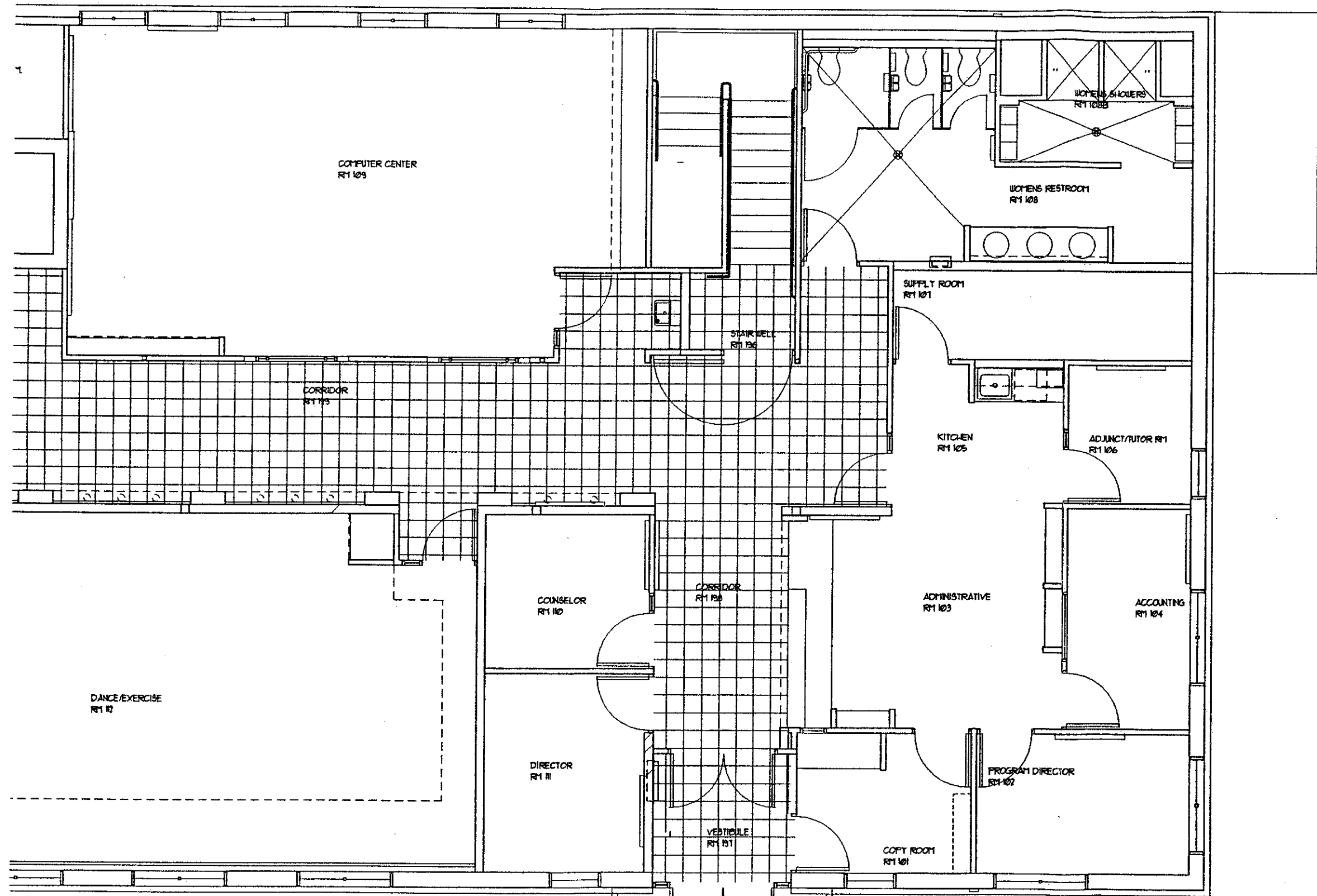
RECEIVED  
OCT 25 1989  
B & H

PLAN-LEVEL 1

10/18/89 END SET  
8/17/89 DES. CD  
8/16/89 CHECK SET

A 101



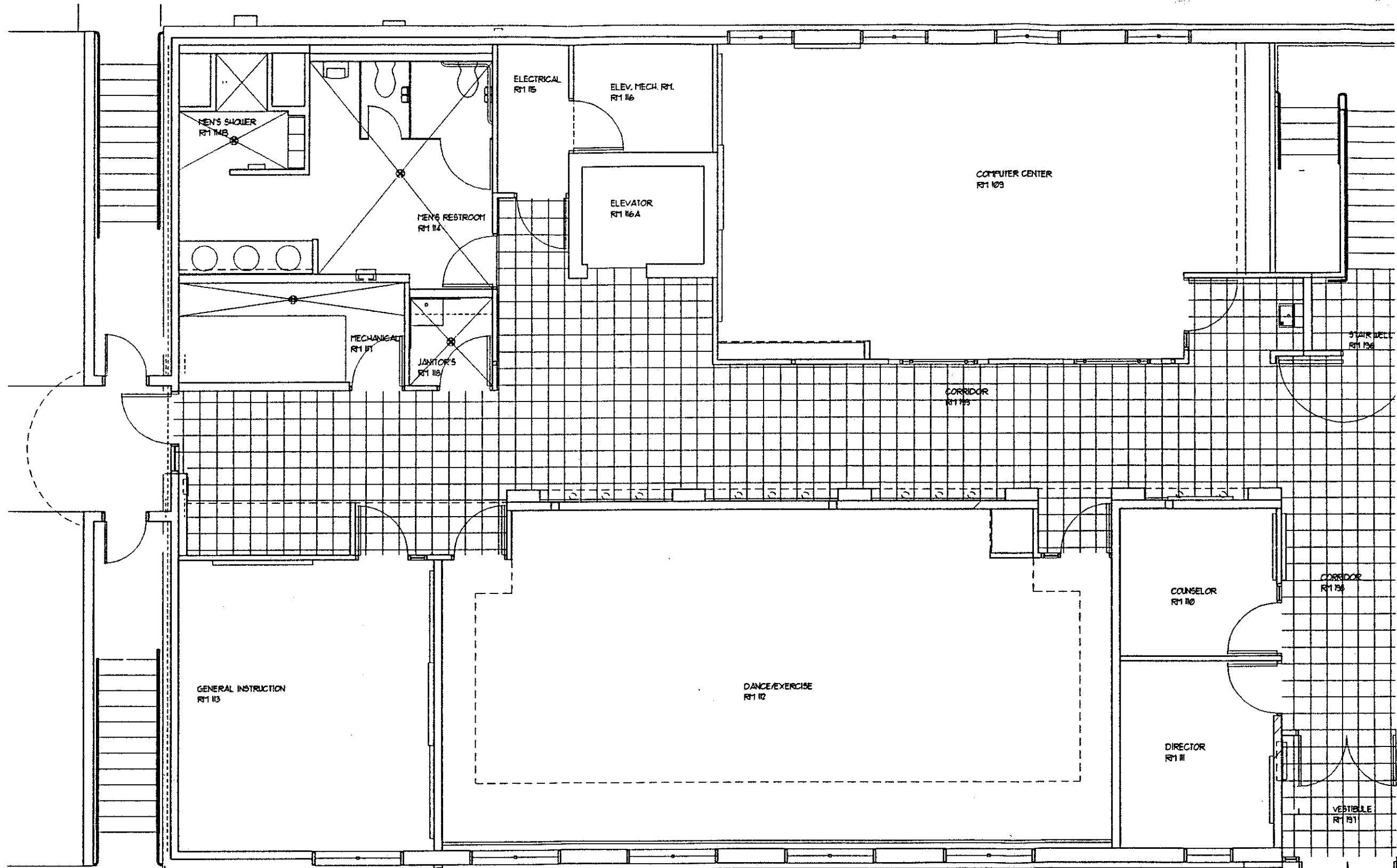


# LAPPALA CENTER FIRST FLOOR



DOUGLAS R. ARCHITECTURE  
PORTERFIELD AND  
ARCHITECT | DESIGN

444 South Oxford Park Drive, Suite 114  
Orem, Utah, 84058  
303-766-4500

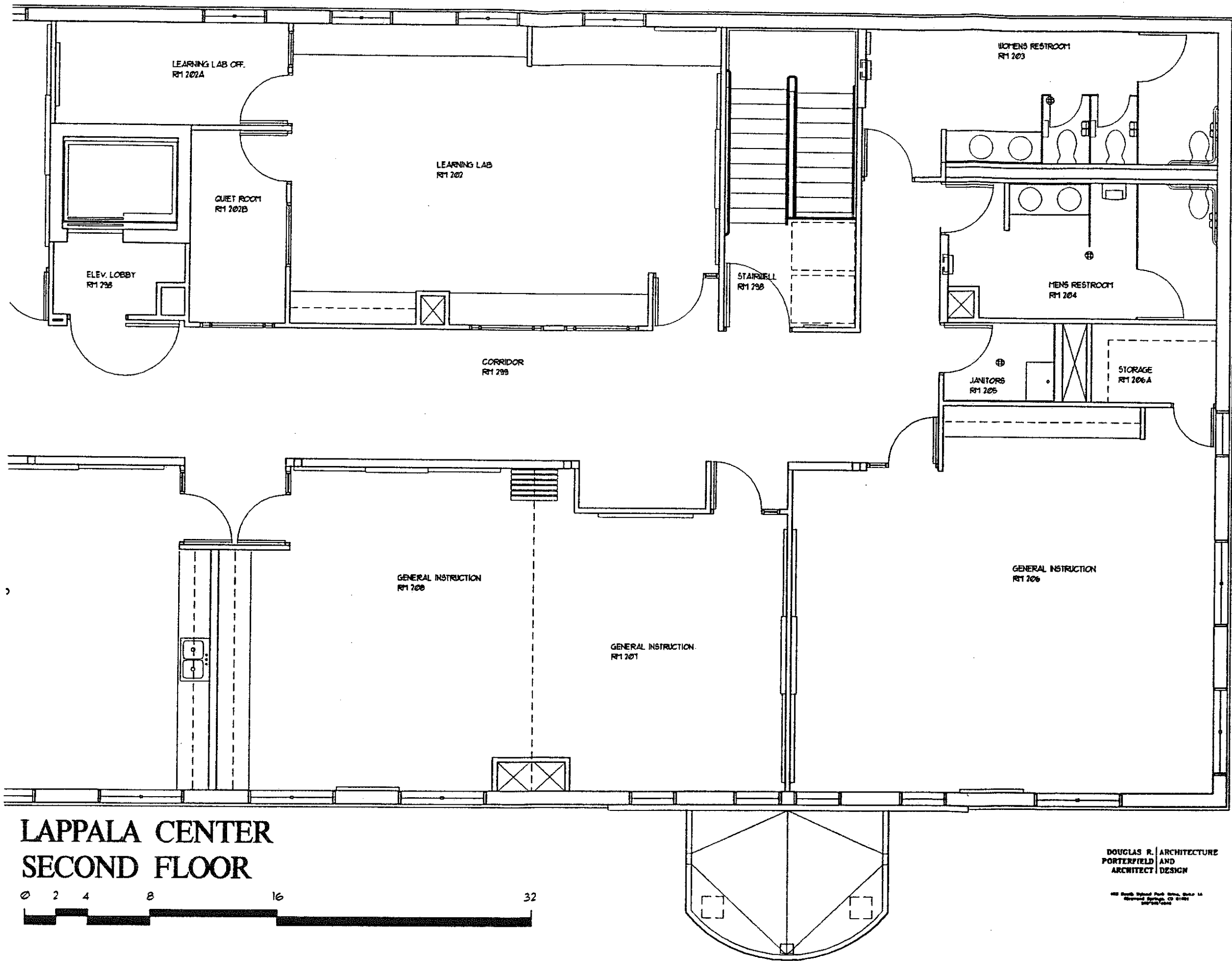


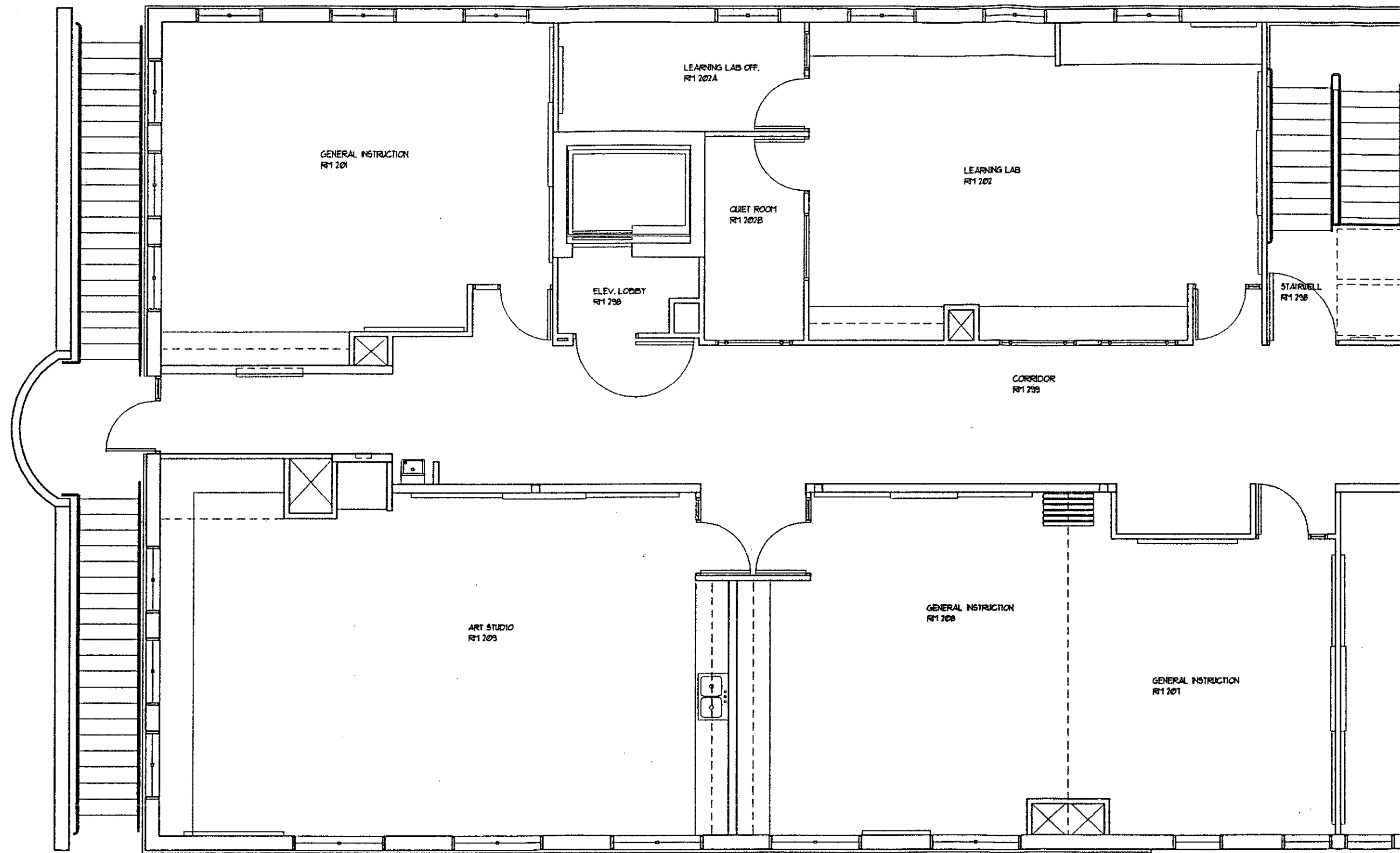
# LAPPALA CENTER FIRST FLOOR

DOUGLAS R. ARCHITECTURE  
PORTERFIELD AND  
ARCHITECT DESIGN

488 South Oxford Park Drive, Suite 14  
Glenwood Springs, CO 81601  
970/233-0000







**LAPPALA CENTER  
SECOND FLOOR**



**DOUGLAS R. ARCHITECTURE  
PORTERFIELD AND  
ARCHITECT DESIGN**

400 South Highland Park Drive, Suite 44  
Boulder, CO 80504  
303.440.1000

