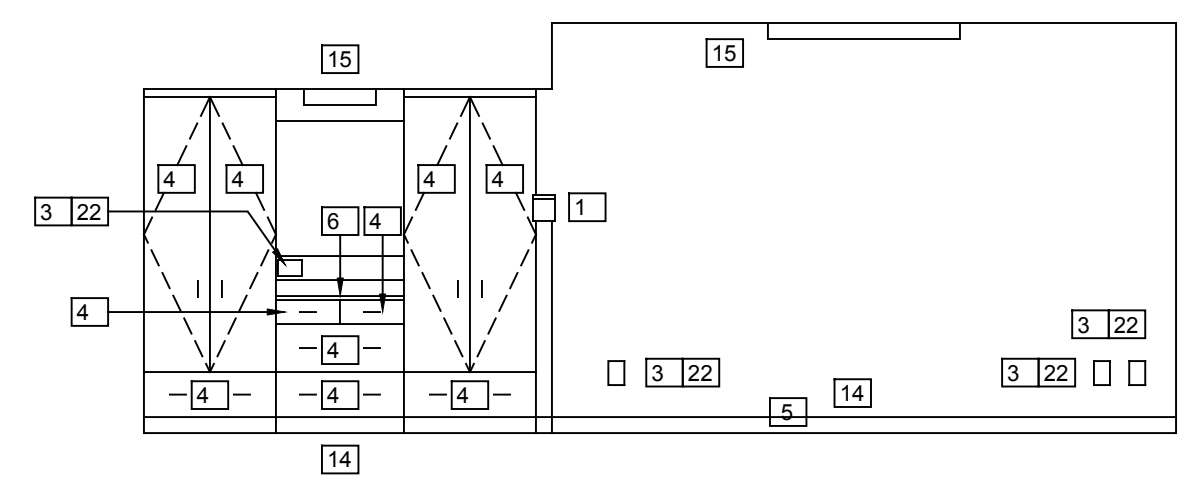
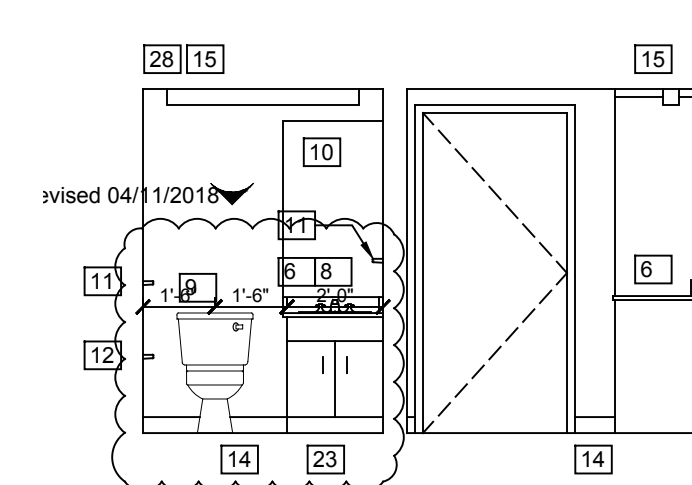


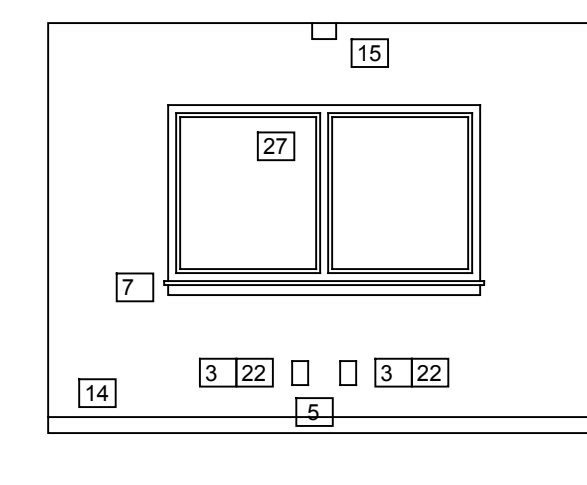
**01 Interior Elev**  
DEM1 scale: 1/4" = 1'-0"



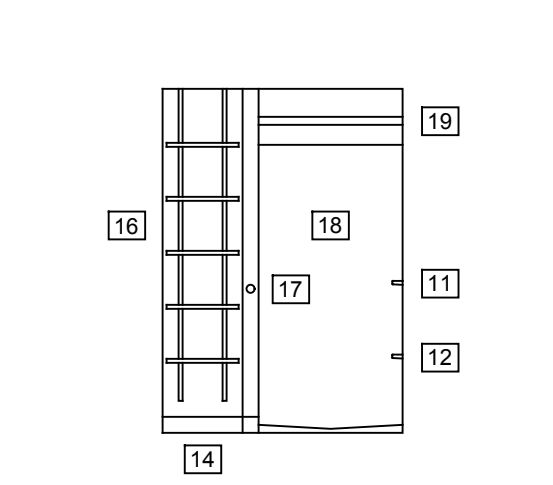
**02 Interior Elev**  
DEM1 scale: 1/4" = 1'-0"



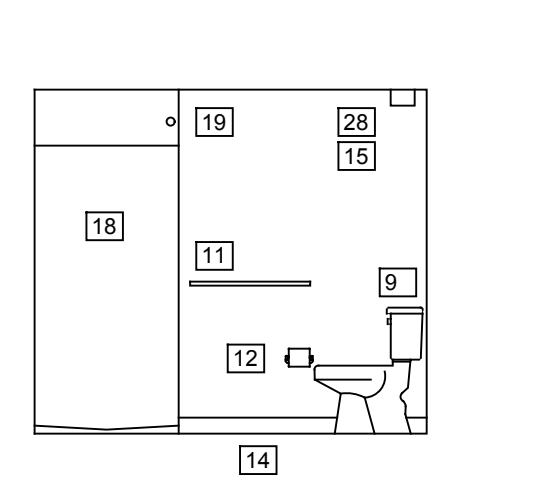
**03 Interior Elev**  
DEM1 scale: 1/4" = 1'-0"



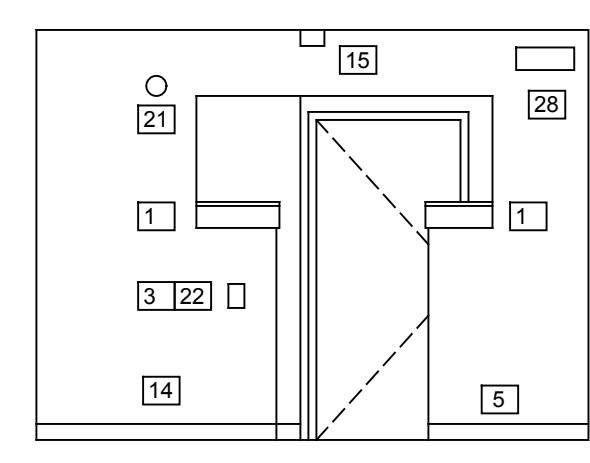
**04 Interior Elev**  
DEM1 scale: 1/4" = 1'-0"



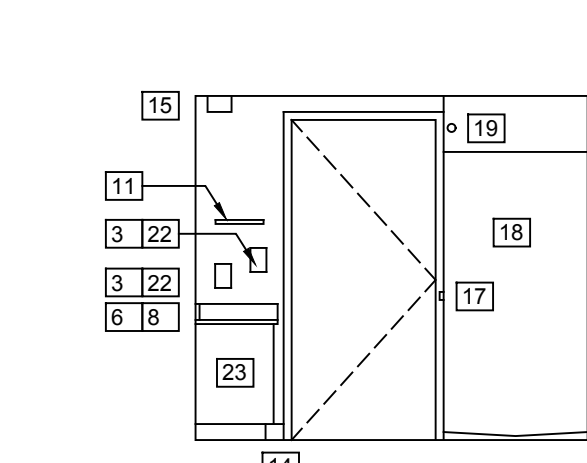
**05 Interior Elev**  
DEM1 scale: 1/4" = 1'-0"



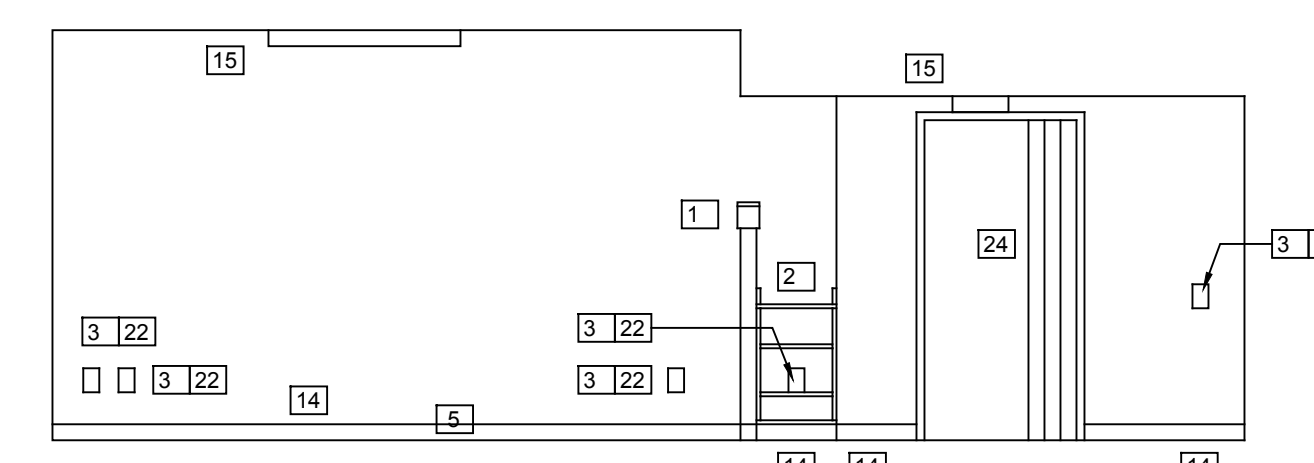
**06 Interior Elev**  
DEM1 scale: 1/4" = 1'-0"



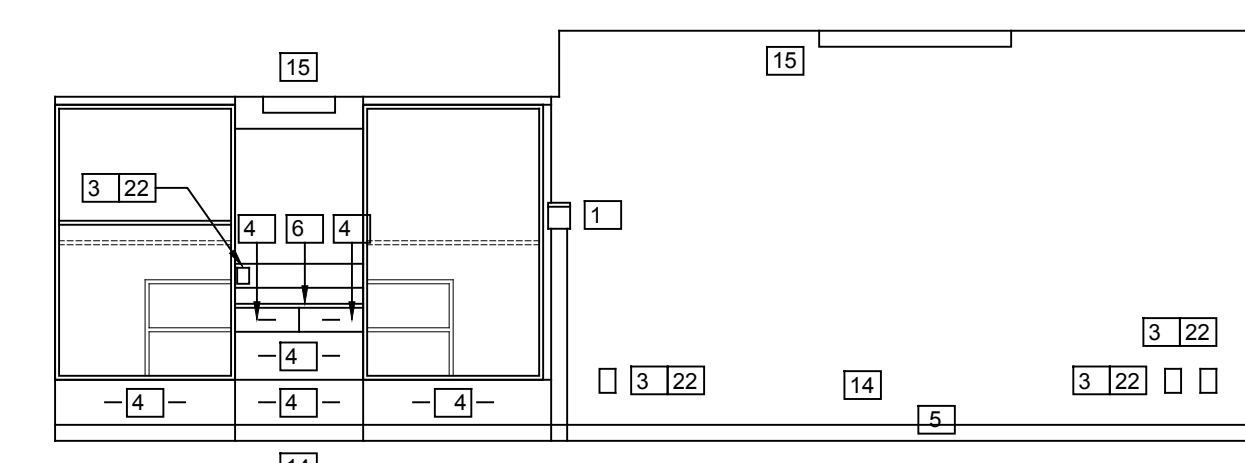
**07 Interior Elev**  
DEM1 scale: 1/4" = 1'-0"



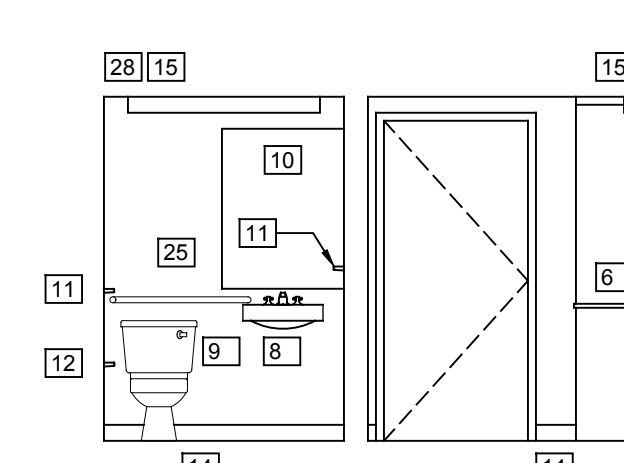
**08 Interior Elev**  
DEM1 scale: 1/4" = 1'-0"



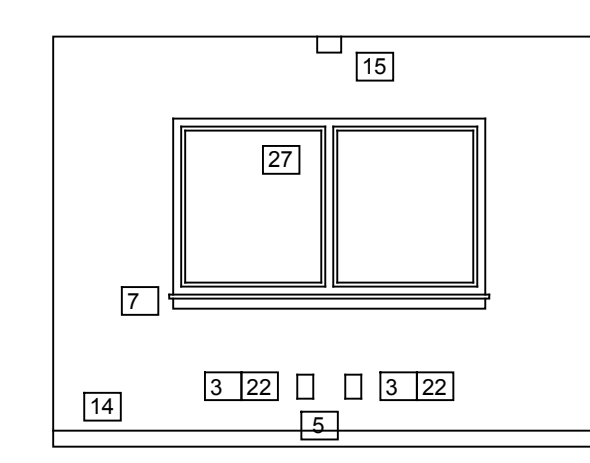
**09 Interior Elev**  
DEM1 scale: 1/4" = 1'-0"



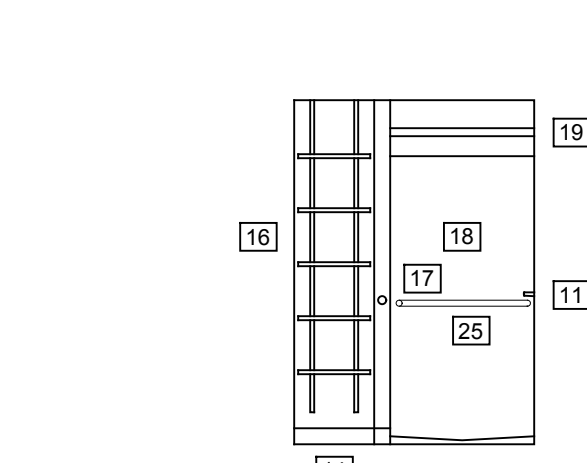
**10 Interior Elev**  
DEM1 scale: 1/4" = 1'-0"



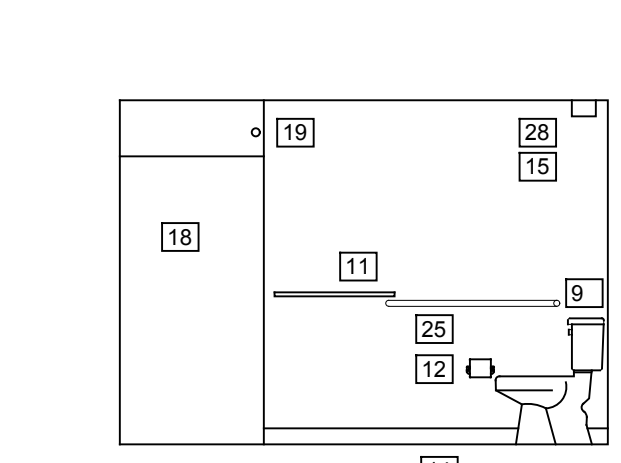
**11 Interior Elev**  
DEM1 scale: 1/4" = 1'-0"



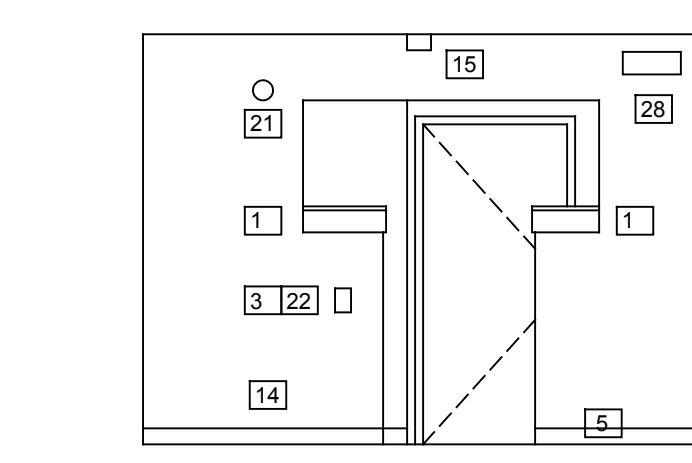
**12 Interior Elev**  
DEM1 scale: 1/4" = 1'-0"



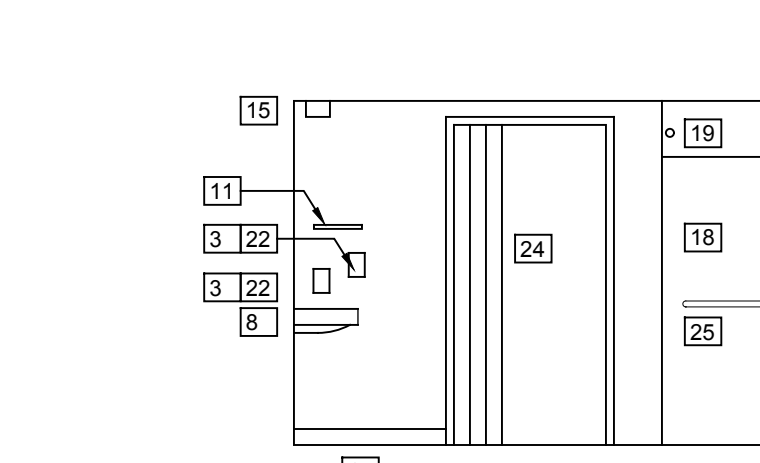
**13 Interior Elev**  
DEM1 scale: 1/4" = 1'-0"



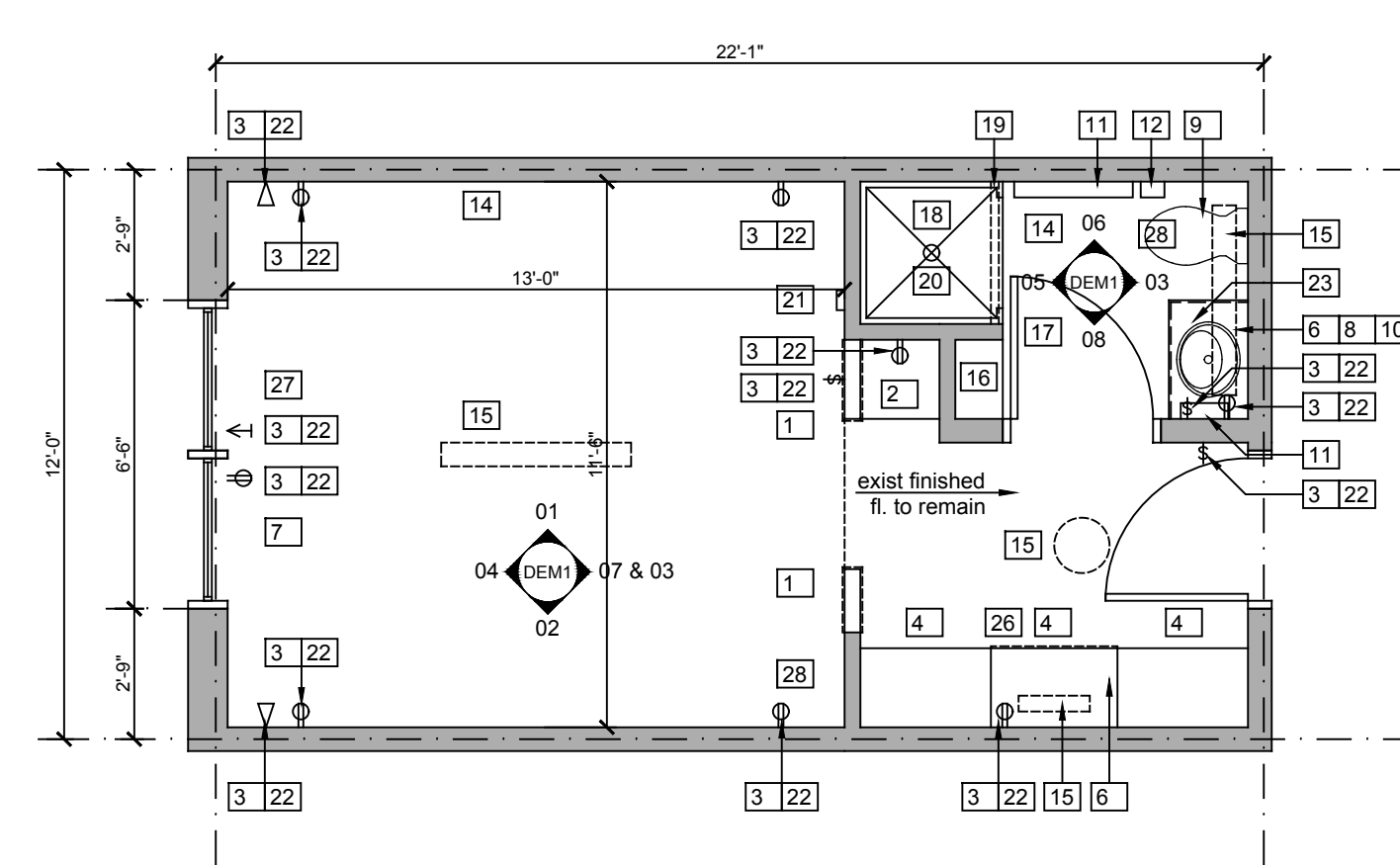
**14 Interior Elev**  
DEM1 scale: 1/4" = 1'-0"



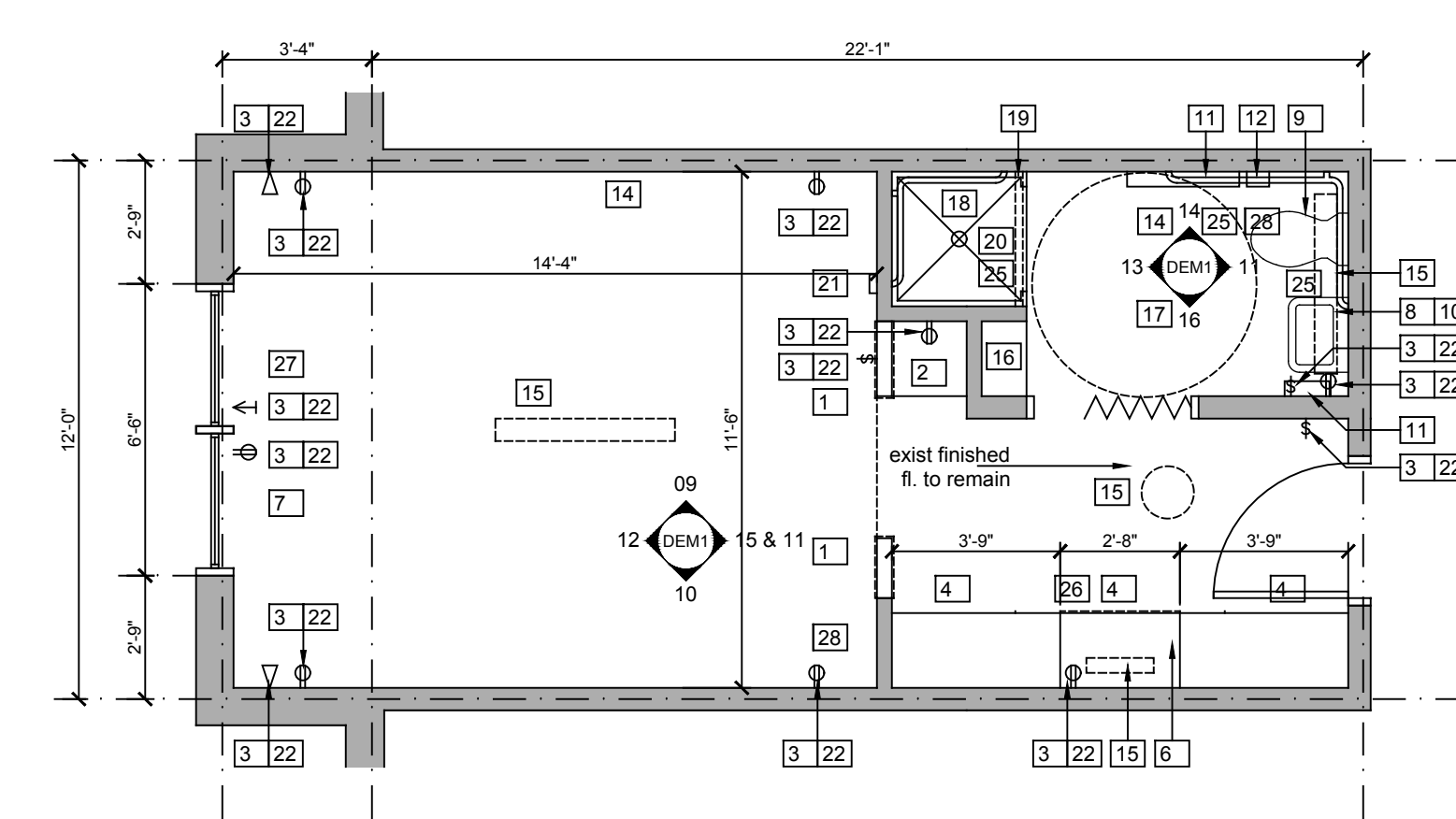
**15 Interior Elev**  
DEM1 scale: 1/4" = 1'-0"



**16 Interior Elev**  
DEM1 scale: 1/4" = 1'-0"



**17 Standard Demolition Plan**  
DEM1 scale: 1/4" = 1'-0"



**18 ADA Unit Demolition Plan**  
DEM1 scale: 1/4" = 1'-0"

**DEMOLITION NOTES**

- |   |  |
|---|--|
| 1 Remove wall cap and trim  | 15 Remove existing light fixtures                  |
| 2 Remove entire shelving system   | 16 Remove existing shelves, brackets and standards |
| 3 Remove all electrical device wall plates  | 17 Remove wall mounted door stop                   |
| 4 Remove existing cabinet doors and drawer doors (exposed face panel only at drawers) | 18 Remove existing shower finish walls & base      |
| 5 Existing carpet to remain   | 19 Remove shower rod                               |
| 6 Remove countertop and backsplash  | 20 Remove existing shower faucet & valve           |
| 7 Remove window sill and trim   | 21 Not Used  |
| 8 Remove existing sink and faucet   | 22 Remove existing wall electric boxes             |
| 9 Remove existing toilet  | 23 Remove existing vanity cabinet                  |
| 10 Remove mirror  | 24 Remove accordion style door and frame           |
| 11 Remove wall mounted towel bars   | 25 Remove existing grab bars                       |
| 12 Remove wall mounted toilet paper holder  | 26 Remove existing drawer slides                   |
| 13 Not Used   | 27 Remove and retain existing window shades        |
| 14 Remove wall base   | 28 Remove existing HVAC grill                      |

Note 14 refers to all walls with existing vinyl or rubber base. CMC to supply base only. GC to install and include all other material and methods required for proper installation, including adhesive

Note 27 GC to remove window shades but retain for CMC to reinstall after construction

Code Information	
Project Name:	Colorado Mountain College Sopris Hall Remodel
Address:	3000 County Road 114 Glenwood Springs, CO 81601
Governing Code:	2015 IBC, IECC, IEBC, IMC & 2017 NEC
Alteration Level (exist. bldg):	Level 1 (Chapter 9 IEBC)
Occupancy Classification:	R2 (ADA Rooms) (Chapter 9 IEBC)
Existing Construction Type:	VB (Chapter 9 IEBC)
Existing Building Area:	48,800 SF
Area of Remodel (ADA Res Unit):	342 SF (2 rooms only)
Fire Protection / Sprinkler System:	Yes - Existing
Number of Floors:	3 (remodel at Main level only)
Handicap Accessible:	Yes

Revised 04/11/2018

Construction
Demolition: Interior Elevations & Unit Plans
Date: 01-26-19 1811C-01-26-19
<b>DEM1</b>