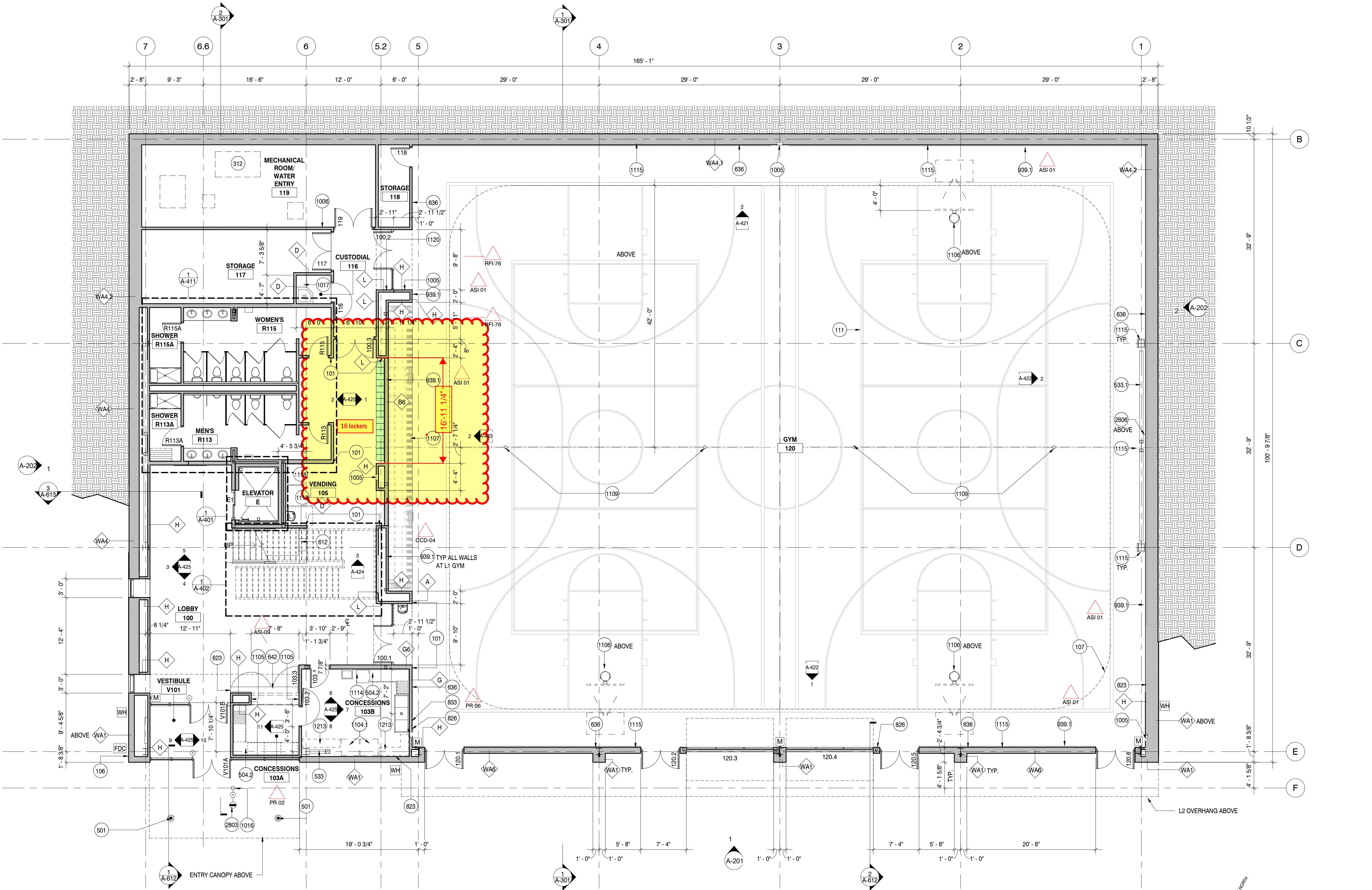


- GENERAL NOTES**
- REFER TO SHEET A-601 FOR EXTERIOR WALL & ROOF ASSEMBLIES, AND A-602 FOR INTERIOR PARTITIONS.
  - PROVIDE MOISTURE RESISTANT SHEET ROCK BEHIND ALL SINKS.
  - PROVIDE CEMENTITIOUS BACK BOARD BEHIND ALL CERAMIC TILE INSTALLATIONS.
  - PROVIDE FIRE TREATED BLOCKING AT ALL WALL MOUNTED EQUIPMENT, ACCESSORIES (GRAB BARS, ETC.) CABINETS, ETC.
  - ALL PARTITIONS ARE TYPE 'B', U.O.N. ON PLANS OR ENLARGED PLANS.
  - PROVIDE PLYWOOD OR FIRE TREATED WOOD BLOCKING AT ALL UPPER CABINETS, DOOR STOPS, FLAT PANELS AND SMART BOARDS.
  - ALL EQUIPMENT SHOWN AS DASHED IS OWNER FURNISHED.
  - ALL FURNITURE SHOWN IS OFOI, FOR REFERENCE ONLY.
  - PROVIDE STAINLESS STEEL CORNER GUARDS, FROM BASE UP 48" AT ALL OUTSIDE CORNERS IN PUBLIC SPACES.
  - ALL EXPOSED STEEL COLUMNS AND BRACES TO BE PAINTED.
  - ARCHITECTURAL DRAWINGS INDICATE LOCATIONS OF SELECT EXPOSED MECH. ELEC. FA, TECHNOLOGY AND AV DEVICES. REFER TO DRAWINGS FOR THOSE DISCIPLINES FOR ADDITIONAL DEVICE INFORMATION.
  - ALL POWER AND SIGNAL FIXTURES ARE DIMENSIONED TO CENTER OF FIXTURE UNLESS OTHERWISE NOTED.
  - SEE MEP, AV AND IT DRAWINGS FOR ALL POWER, SIGNAL AND LIFE SAFETY DEVICES IN STAIRWELLS, MECHANICAL EQUIPMENT ROOMS, ELECTRICAL AND IT CLOSETS, JANITOR CLOSETS, EXCEPT AS INDICATED ON ARCHITECTURAL DRAWINGS.
  - ANY JUNCTION BOXES TO BE LOCATED AS NECESSARY TO ACHIEVE FUNCTION DESCRIBED IN ELECTRICAL, POWER, LIGHTING AND SYSTEMS DOCUMENTS.
  - REFER TO ELECTRICAL/IT DRAWINGS FOR ADDITIONAL MOUNTING LOCATION AND HEIGHT INFORMATION.
  - REFER TO ARCHITECTURAL 200 AND 400 SERIES ELEVATIONS FOR ADDITIONAL DEVICE LOCATION INFORMATION.
  - ALL PARTITIONS THAT APPEAR TO BE CENTERED ON GRIDLINE ARE IN FACT CENTERED.
  - ALL PARTITION DIMENSIONS ARE TO FINISHED FACE OF PARTITION, U.O.N.
  - ALL DOORS ARE 9" FROM PERPENDICULAR WALL TO HINGE SIDE OF DOOR, U.O.N.
  - AT ALL LOCATIONS OF SPRAY FOAM INSULATION, GYPSUM BOARD TO BE CONTINUOUS ON THE INSIDE FACE OF THE ENTIRE WALL CAVITY.
  - ALL EXPOSED DEVICES IN GYMNASIUM TO RECEIVE PROTECTIVE CAGE OR COVER.

- LEGEND**
- ELECTRICAL FLOOR BOX
  - ELECTRICAL & DATA FLOOR BOX
  - CARD READER
  - ADA DOOR OPENER
  - MANUAL FIRE ALARM PULL STATION
  - FIRE DEPARTMENT CONNECTION
  - WALL HYDRANT 24" ABOVE FINISH GRADE.
  - RE: PLUMBING & RE: LANDSCAPE FOR FINISH GRADE
  - FLOOR DRAIN
  - FLOOR SINK

- WORK NOTES**
- ALIGN
  - KNOX BOX
  - TRACK ABOVE
  - ATHLETIC STRIPING. PROVIDE STRIPING FOR TWO BASKETBALL COURTS, ONE INDOOR SOCCER AND TWO VOLLEYBALL COURTS.
  - HOUSEKEEPING PAD
  - STEEL COLUMN, RE: STRUCTURAL. PAINTED.
  - STAINLESS STEEL COUNTER WITH BACKSLASH AND OPEN SHELVING BASE CABINET (ALTERNATE)
  - HSS BRACE, RE: STRUCTURAL. PAINT ALL EXPOSED STEEL PT-1
  - CUSTOM MILLWORK BENCH
  - SS-3 WATERFALL EDGE FROM T.O. COUNTER TO FINISHED FLOOR
  - PROVIDE PLYWOOD BEHIND GYPSUM BOARD AT THIS WALL, FROM LEVEL 1 TO CEILING. STUD POSITION REMAINS AS SHOWN (ALTERNATE)
  - QUARTZ SURFACE COUNTERTOP QZ-1
  - WALL MOUNTED ACCESS PANEL. PAINT TO MATCH ADJACENT WALL.
  - HYDRAULIC DOOR KEY SWITCHES, FLUSH MOUNT
  - OPERABLE WINDOW OVERRIDE KEY OPERATED SWITCH. LOCATE AT TYPICAL SWITCH HEIGHT
  - ABUSE-RESISTANT GYPSUM BOARD, FULL HEIGHT
  - SEMI-RECESSED FIRE EXTINGUISHER CABINET
  - FIRE EXTINGUISHER, PROVIDE WALL MOUNTED BRACKET.
  - ADA BUTTON PEDESTAL
  - SHELVING AND MOP HOLDERS, TA-26
  - COMMERCIAL GRADE REFRIGERATOR, CFCI. PROVIDE POWER.
  - POINT OF SALE LOCATION, EQUIPMENT IS OFOI. PROVIDE POWER AND DATA AT COUNTER, RE: ELEC AND TECH
  - RETRACTABLE BASKETBALL HOOP (ALTERNATE)
  - MOTORIZED BLEACHERS, 12 TIER (ALTERNATE)
  - FLOATING FLOOR SOCKET WITH LOCKABLE FLOOR COVER PLATE FOR VOLLEYBALL NET POLE
  - ICE MAKER, CFCI. PROVIDE POWER AND WATER SUPPLY, RE: MEP
  - SP-1 PROTECTIVE WALL PADDING (ALTERNATE)
  - VENDING MACHINE, OFOI
  - AED, OFOI
  - STORAGE RACKS, OFOI
  - CARD READER, PEDESTAL MOUNTED, RE: TECH. CARDREADER IS OFOI.
  - CAMERA, RE: TECH



LEVEL ONE FLOOR PLAN  
1/8" = 1'-0"  
A-101

ASI-09 1/11/2019  
ASI-01 06/13/2016  
PR-02 10/03/2016  
RFI-76 10/05/2016  
CCD-04 10/31/2016  
PR-06 12/06/2016

1/23/2019 11:00:59 AM

Issue Date  
100% Construction Documents 07/20/2018  
ASI-09 1/11/2019

Project Number: 17-061  
Drawn By: CK  
Reviewed By: JZ  
Approved By: JG

LEVEL ONE FLOOR PLAN

A-101



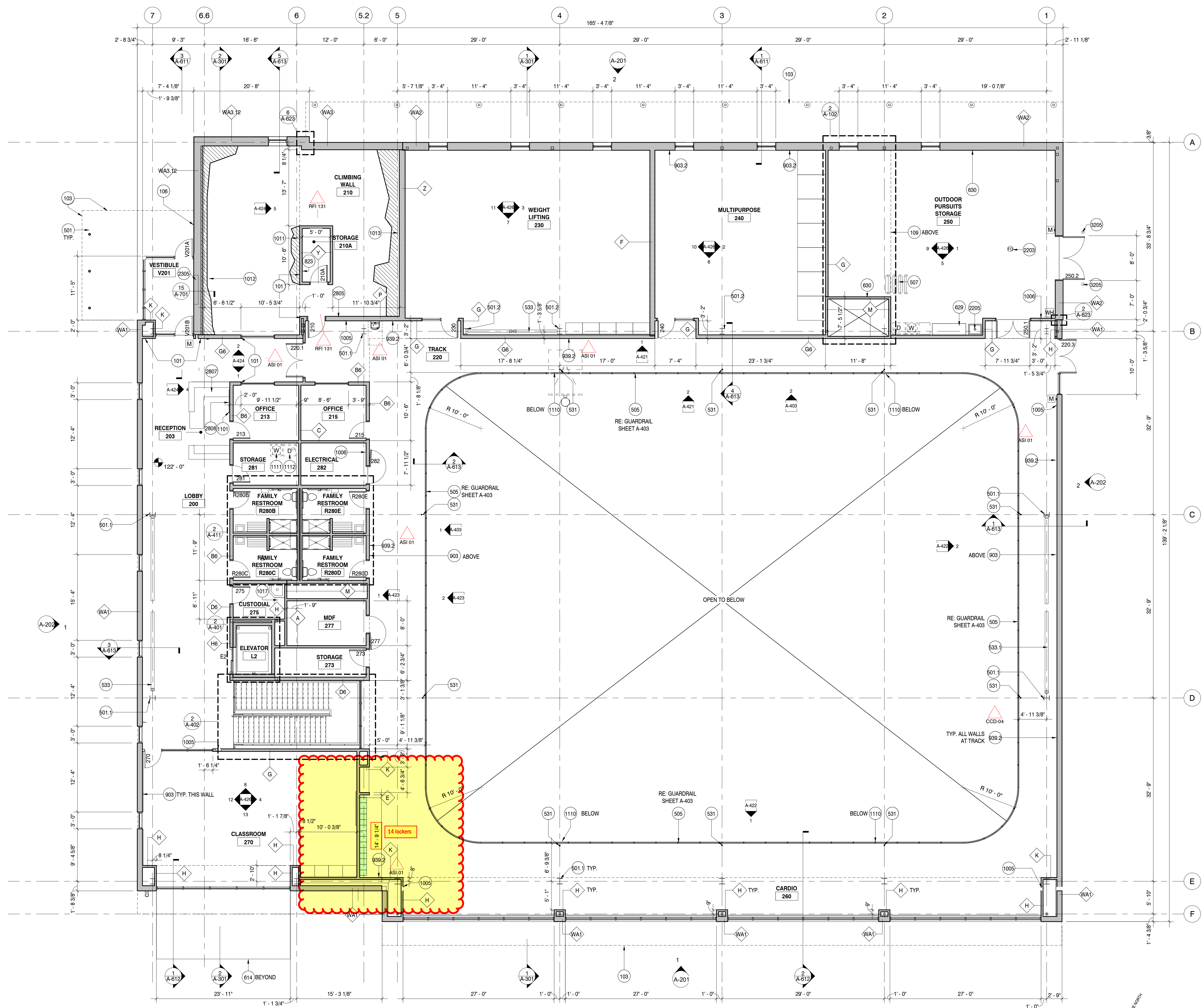
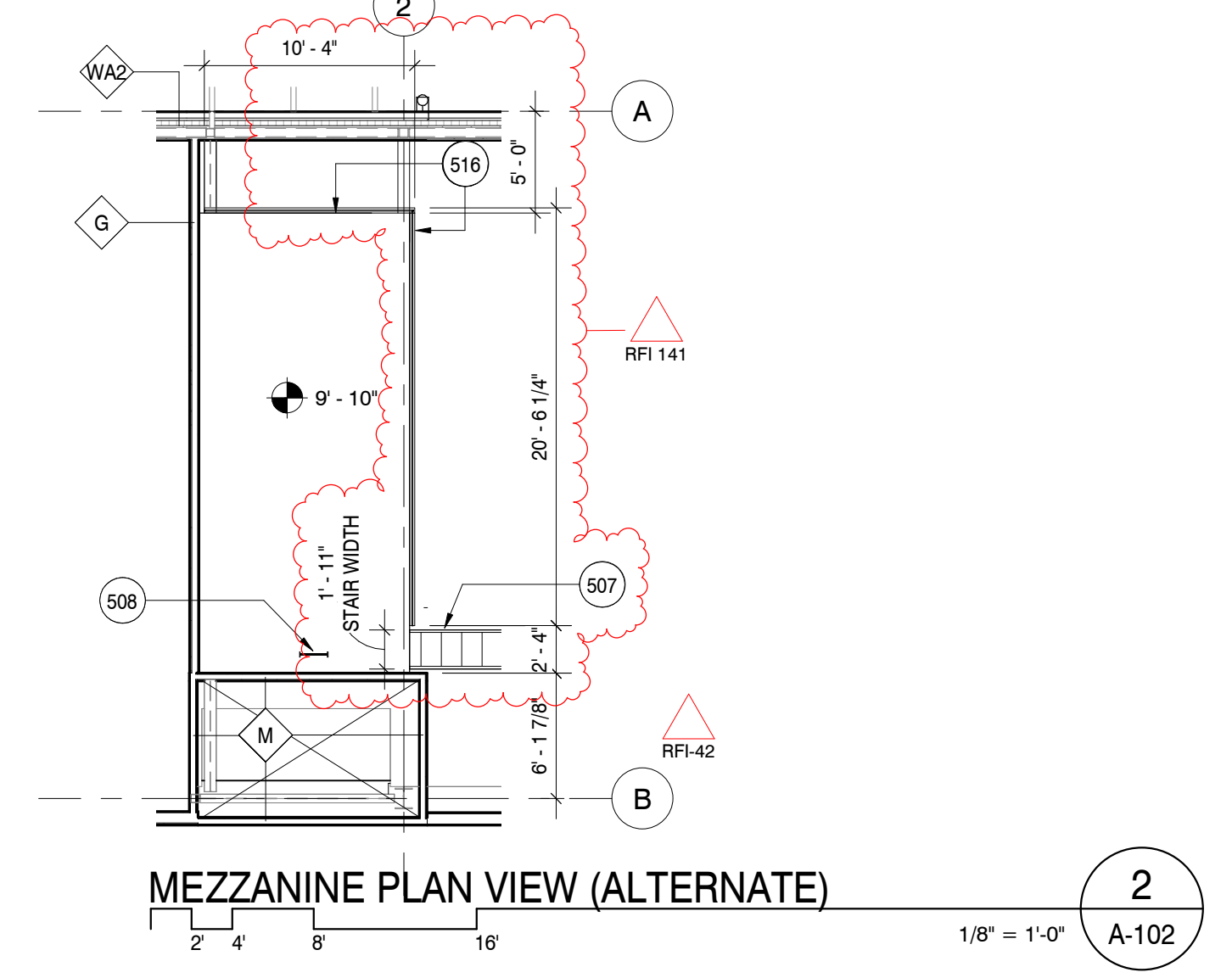
- GENERAL NOTES**
- REFER TO SHEET A-601 FOR EXTERIOR WALL & ROOF ASSEMBLIES, AND A-602 FOR INTERIOR PARTITIONS.
  - PROVIDE MOISTURE RESISTANT SHEET ROCK BEHIND ALL SINKS.
  - PROVIDE CEMENTITIOUS BACK BOARD BEHIND ALL CERAMIC TILE INSTALLATIONS.
  - PROVIDE FIRE TREATED BLOCKING AT ALL WALL MOUNTED EQUIPMENT, ACCESSORIES (GRAB BARS, ETC.) CABINETS, ETC.
  - ALL PARTITIONS ARE TYPE 'B', U.O.N. ON PLANS OR ENLARGED PLANS.
  - PROVIDE PLYWOOD OR FIRE TREATED WOOD BLOCKING AT ALL UPPER CABINETS, DOOR STOPS, FLAT PANELS AND SMART BOARDS.
  - ALL EQUIPMENT SHOWN AS DASHED IS OWNER FURNISHED.
  - ALL FURNITURE SHOWN IS OFOI, FOR REFERENCE ONLY.
  - PROVIDE STAINLESS STEEL CORNER GUARDS, FROM BASE UP 48" AT ALL OUTSIDE CORNERS IN PUBLIC SPACES.
  - ALL EXPOSED STEEL COLUMNS AND BRACES TO BE PAINTED.
  - ARCHITECTURAL DRAWINGS INDICATE LOCATIONS OF SELECT EXPOSED MECH, ELEC, FA, TECHNOLOGY AND AV DEVICES. REFER TO DRAWINGS FOR THOSE DISCIPLINES FOR ADDITIONAL DEVICE INFORMATION.
  - ALL POWER AND SIGNAL FIXTURES ARE DIMENSIONED TO CENTER OF FIXTURE UNLESS OTHERWISE NOTED.
  - SEE MEP, AV AND IT DRAWINGS FOR ALL POWER, SIGNAL AND LIFE SAFETY DEVICES IN STAIRWELLS, MECHANICAL EQUIPMENT ROOMS, ELECTRICAL AND IT CLOSETS, JANITOR CLOSETS, EXCEPT AS INDICATED ON ARCHITECTURAL DRAWINGS.
  - ANY JUNCTION BOXES TO BE LOCATED AS NECESSARY TO ACHIEVE FUNCTION DESCRIBED IN ELECTRICAL POWER, LIGHTING AND SYSTEMS DOCUMENTS.
  - REFER TO ELECTRICAL IT DRAWINGS FOR ADDITIONAL MOUNTING LOCATION AND HEIGHT INFORMATION.
  - REFER TO ARCHITECTURAL 200 AND 400 SERIES ELEVATIONS FOR ADDITIONAL DEVICE LOCATION INFORMATION.
  - ALL PARTITIONS THAT APPEAR TO BE CENTERED ON GRIDLINE ARE IN FACT CENTERED.
  - ALL PARTITION DIMENSIONS ARE TO FINISHED FACE OF PARTITION, U.O.N.
  - ALL DOORS ARE 6" FROM PERPENDICULAR WALL TO HINGE SIDE OF DOOR, U.O.N.
  - AT ALL LOCATIONS OF SPRAY FOAM INSULATION, GYPSUM BOARD TO BE CONTINUOUS ON THE INSIDE FACE OF THE ENTIRE WALL CAVITY.
  - ALL EXPOSED DEVICES IN GYMNASIUM TO RECEIVE PROTECTIVE GAGE OR COVER.

- LEGEND**
- ELECTRICAL FLOOR BOX
  - ELECTRICAL & DATA FLOOR BOX
  - CARD READER
  - ADA DOOR OPENER
  - MANUAL FIRE ALARM PULL STATION
  - FIRE DEPARTMENT CONNECTION
  - WALL HYDRANT 24" ABOVE FINISH GRADE, RE: PLUMBING & RE: LANDSCAPE FOR FINISH GRADE
  - FLOOR DRAIN
  - FLOOR SINK

- WORK NOTES**
- ALIGN
  - ROOF OVERHANG ABOVE
  - KNOX BOX
  - MEZZANINE (ALTERNATE)
  - STEEL COLUMN, RE: STRUCTURAL, PAINTED.
  - STEEL COLUMN, RE: STRUCTURAL, PAINT PT-1
  - STEEL COLUMN, RE: STRUCTURAL, PAINT PT-2
  - STEEL GUARD RAIL WITH STEEL PERFORATED PANELS (ALTERNATE), GUARDRAIL 1, RE: GUARDRAIL SHEET A-404
  - ALTERNATING TREAD DEVICE, ALTERNATE, PAINT PT-2
  - WALL MOUNTED LADDER TO ROOF HATCH, PAINT PT-2
  - PIPE AND TUBE STEEL GUARDRAIL, PAINT PT-2
  - STEEL ROD, RE: STRUCTURAL, PAINT PT-1
  - HSS BRACE, RE: STRUCTURAL, PAINT ALL EXPOSED STEEL PT-2
  - HSS BRACE, RE: STRUCTURAL, PAINT ALL EXPOSED STEEL PT-1
  - CUSTOM MILLWORK BENCH
  - WOOD AND STEEL FRAMED CANOPY (ALTERNATE)
  - BUTCHER BLOCK COUNTER WITH BASE CABINETS (ALTERNATE)
  - PLYWOOD BACKER TO 8'-0" AFF. FULL WIDTH OF WALL.
  - WALL MOUNTED ACCESS PANEL, PAINT TO MATCH ADJACENT WALL.
  - SAP-1 SOUND-ABSORBING WALL UNITS (ALTERNATE)
  - SAP-1 SOUND-ABSORBING WALL UNITS, FROM 4FT TO 8FT AFF.
  - ABUSE RESISTANT GYPSUM BOARD, UP TO 8FT AFF, TYPICAL AT WALLS AND DOOR ALCOVES AT TRACK 220.
  - SEMI-RECESSED FIRE EXTINGUISHER CABINET
  - FIRE EXTINGUISHER, PROVIDE WALL MOUNTED BRACKET.
  - RAPPILING TRAINING PLATFORM WITH CLIMBING SURFACE ON THREE SIDES. PROVIDE TWO BELAY BARS AT TOP OF WALL.
  - ROPES CLIMBING LANES, ALL OUTFITTED WITH BELAY BAR.
  - BOLLARDING WALL, FULL HEIGHT AND WIDTH OF WALL.
  - SHELVING AND MOP HOLDERS, TA-26
  - WALL MOUNTED FLAT SCREEN TV, OFOI.
  - PROVIDE POWER AND DATA AT WALL, CENTERED BEHIND SCREEN, RE: ELEC AND TECH
  - SCOREBOARD (ALTERNATE), PROVIDE POWER AND DATA CENTERED BEHIND BOARD, RE: ELEC AND TECH
  - DOMESTIC WASHING MACHINE, OFOI
  - DOMESTIC DRYER, OFOI
  - PROVIDE SEDIMENT TRAP AT DRAIN
  - UTILITY SINK, RE: PLUMBING
  - CABINET UNIT HEATER, RE: MECH
  - WALL MOUNTED PANIC BUTTON, RE: TECH
  - PANIC BUTTON MOUNTED BELOW DESK SURFACE, RE: TECH
  - WALL MOUNTED LOCK-DOWN BUTTON, RE: TECH
  - BOLLARD, GALVANIZED AND PAINTED, PT-2

Issue	Date
100% Construction Documents	07/20/2018
RFI 141	1/21/2018

Project Number:	17-061
Drawn By:	CK
Reviewed By:	JZ
Approved By:	JG



LEVEL TWO FLOOR PLAN  
1/8" = 1'-0"  
A-102

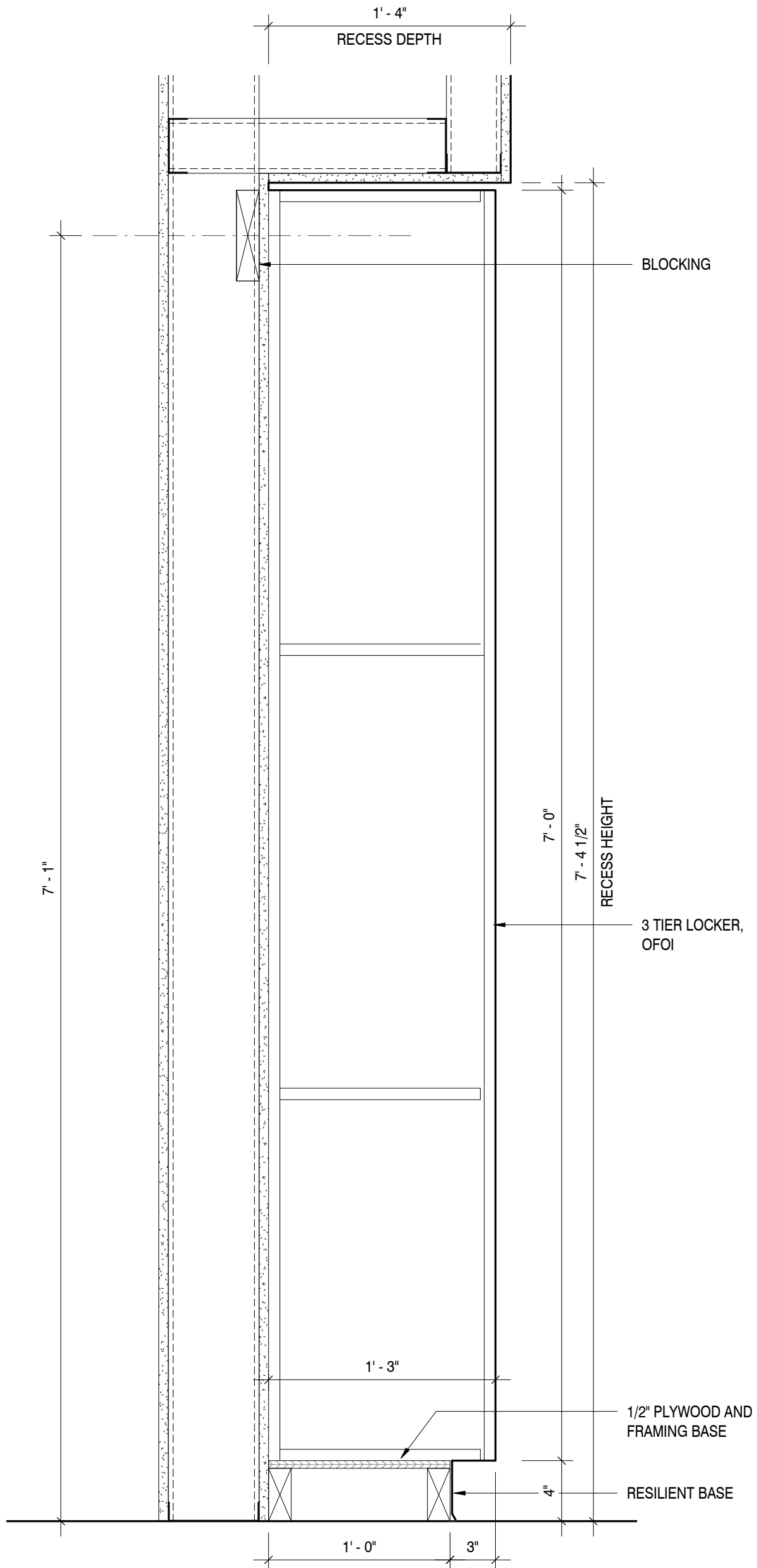
RFI 131 1/8/2018  
RFI 141 1/21/2018  
ASI 01 08/13/2018  
RFI-42 9/27/2018  
CCD-04 10/01/2018

1/23/2018 11:00:53 AM



**3 TIER LOCKER:**

**H-84"**  
**W-12"**  
**D-15"**



**LOCKER RECESS SECTION**  
**1 1/2" = 1'-0"**

**SECTION 10 51 23**  
**PLASTIC-LAMINATE-CLAD LOCKERS**  
**(Alternate)**

PART 1 - GENERAL

1.01 RELATED DOCUMENTS

- A. Drawings and general provisions of the Contract, including General and Supplementary Conditions and Division 01 Specification Sections, apply to this Section.

1.02 SUMMARY

- A. Section includes:

- 1. Plastic-laminate-clad wood lockers.

- B. Related Requirements:

- 1. Section 01 23 00 "Alternates" for a description of alternates.

1.03 ACTION SUBMITTALS

- A. Product Data: For each type of plastic-laminate-clad wood locker.

- 1. Include construction details, material descriptions, dimensions of individual components and profiles, and finishes for each type of locker

- B. Shop Drawings: For plastic-laminate-clad wood lockers.

- 1. Include plans, elevations, sections, details, and attachments to other work.
  - 2. Show details full size.
  - 3. Show locations and sizes of furring, blocking, and hanging strips, including concealed blocking and reinforcement specified in other Sections.
  - 4. Show locations and sizes of cutouts and holes for items installed in lockers.
  - 5. Show locker fillers, trim, base, sloping tops, and accessories.
  - 6. Show locker numbering sequence.

- C. Samples for Verification: For the following products:

- 1. Plastic-laminate-clad panels, not less than 8 by 10 inches, for each type, color, pattern, and surface finish.
  - 2. Thermoset decorative-overlay-surfaced panels, not less than 8 by 10 inches, for each type, color, pattern, and surface finish.
  - 3. Exposed cabinet hardware and accessories, one unit for each type and finish.

#### 1.04 CLOSEOUT SUBMITTALS

- A. Maintenance Data: For adjusting, repairing, and replacing locker doors and latching mechanisms to include in maintenance manuals.

#### 1.05 MAINTENANCE MATERIAL SUBMITTALS

- A. Furnish extra materials that match products installed and that are packaged with protective covering for storage and identified with labels describing contents.

1. Full-size locker doors, complete with specified door hardware. Furnish no fewer than five doors of each type and color installed.
2. Full-size units of the following locker hardware items equal to 10 percent of amount installed for each type and finish installed, but no fewer than five units:

- a. Hinges.
- b. Pulls.
- c. Shelf rests.

#### 1.06 DELIVERY, STORAGE, AND HANDLING

- A. Do not deliver lockers until painting and similar operations that could damage lockers have been completed in installation areas. If lockers must be stored in other-than-installation areas, store only in areas where environmental conditions are the same as those in final installation location, and comply with requirements specified in "Field Conditions" Article.

#### 1.07 FIELD CONDITIONS

- A. Environmental Limitations: Do not deliver or install lockers until building is enclosed, wet work is complete, and HVAC system is operating and maintaining temperature between 60 and 90 deg F and relative humidity between 25 and 55 percent during the remainder of the construction period.
- B. Field Measurements: Where lockers are indicated to fit to other construction, verify dimensions of other construction by field measurements before fabrication, and indicate measurements on Shop Drawings. Coordinate fabrication schedule with construction progress to avoid delaying the Work.
  1. Locate concealed framing, blocking, and reinforcements that support lockers by field measurements before being enclosed, and indicate measurements on Shop Drawings.
- C. Established Dimensions: Where lockers are indicated to fit to other construction, establish dimensions for areas where lockers are to fit. Provide allowance for trimming at site, and coordinate construction to ensure that actual dimensions correspond to established dimensions.

#### 1.08 COORDINATION

- A. Coordinate sizes and locations of concealed wood support bases.

1. Requirements are specified in Section 06 10 53 "Miscellaneous Rough Carpentry."
- B. Coordinate sizes and locations of framing, blocking, furring, reinforcements, and other related units of work specified in other Sections to ensure that lockers can be supported and installed as indicated.

#### 1.09 WARRANTY

- A. Special Warranty: Manufacturer agrees to repair or replace components of lockers that fail in materials or workmanship within specified warranty period.
1. Failures include, but are not limited to, the following:
    - a. Structural failures.
    - b. Faulty operation of locks or hardware.
    - c. Deterioration of wood and other materials beyond normal use.
  2. Warranty Period: Three years from date of Substantial Completion.

### PART 2 - PRODUCTS

#### 2.01 GENERAL

- A. Provide materials and products that contain recycled content to the maximum extent possible without compromising the item's integrity.
- B. Basis-of-Design Products: The design is based on the product named. Reference Section 01 60 00 "Product Requirements" for Basis-of-Design product definition and requirements for proposing products comparable to the Basis-of-Design.

#### 2.02 PERFORMANCE REQUIREMENTS

- A. Accessibility Requirements: For lockers indicated to be accessible, comply with applicable provisions in the U.S. Architectural & Transportation Barriers Compliance Board's ADA-ABA Accessibility Guidelines and ICC A117.1.

#### 2.03 PLASTIC-LAMINATE-CLAD WOOD LOCKERS

- A. Basis-of-Design Product: Subject to compliance with requirements, provide **Hollman, Inc.; Plastic Laminate Lockers**, or comparable product by one of the following:
1. Ideal Products, Inc.
  2. Legacy Lockers.
  3. List Industries Inc.
- B. Configuration: Model C, triple tier.
- C. Dimensions: 12 inches wide by 15 inches deep, by 84 inches high.

- D. Construction Style: Flush overlay.
- E. Locker Body: Fabricated from particleboard -core panels covered on both sides with thermoset decorative overlay.
  - 1. Top,Side and Back Panels: 5/8 inch thick.
  - 2. Bottom Panel: Manufacturer's standard 3/4 or 5/8 inch thick.
  - 3. Exposed Panel Edges: 1-mm-thick PVC.
- F. Plastic-Laminate-Clad Wood Doors: High-pressure decorative laminate, Grade VGS, over both sides of particleboard core.
  - 1. Thickness: 5/8 inch thick.
  - 2. Panel Edges: 1-mm-thick PVC.
- G. End Panels: Match style, material, construction, and finish of plastic-laminate-clad wood doors.
- H. Shelves: Fabricated from particleboard-core panels covered on both sides with thermoset decorative overlay; .
  - 1. Thickness: 3/4 inch.
  - 2. Exposed Edges: 1-mm-thick PVC.
- I. Corners and Filler Panels: 3/4-inch- thick panels. Match style, material, construction, and finish of plastic-laminate-clad wood doors.
- J. Continuous Finish Base: Plastic-laminate-clad, 3/4-inch- thick panel that matches door faces; fabricated in lengths as long as practical to enclose base and base ends of lockers.
  
- L. Plastic-Laminate Colors, Patterns, and Finishes:
  - 1. As indicated on Drawing Finish Legend.

#### 2.04 MATERIALS

- A. Composite Wood: Provide materials that comply with requirements of referenced quality standard for each type of woodwork and quality grade specified unless otherwise indicated.
  - 1. Composite Wood Products: Products shall comply with the testing and product requirements of the California Department of Health Services' "Standard Practice for the Testing of Volatile Organic Emissions from Various Sources Using Small-Scale Environmental Chambers."
  - 2. Particleboard: ANSI A208.1, Grade M-2, made with binder containing no urea formaldehyde.

3. Thermoset Decorative Panels: Particleboard or medium-density fiberboard finished with thermally fused, melamine-impregnated decorative paper and complying with requirements of NEMA LD 3, Grade VGL, for Test Methods 3.3, 3.4, 3.6, 3.8, and 3.10.

B. High-Pressure Decorative Laminate: NEMA LD 3, grades as follows:

1. Horizontal Surfaces: Grade HGS.
2. Vertical Surfaces: Grade VGS.

C. Furring, Blocking, Shims, and Hanging Strips: Fire-retardant-treated softwood lumber, kiln dried to less than 15 percent moisture content.

D. Anchors: Select material, type, size, and finish required for each substrate for secure anchorage. Provide metal expansion sleeves or expansion bolts for post-installed anchors. Use nonferrous-metal or hot-dip galvanized anchors and inserts at inside face of exterior walls and at floors.

E. Wood Support Base: 2-by-4-inch nominal-size lumber treated with manufacturer's standard preservative-treatment, process.

## 2.05 HARDWARE

A. General: Provide manufacturer's standard locker hardware complying with the requirements in this Section.

B. Digital Keypad Locks: Battery-powered electronic keypad with reprogrammable manager and owner codes that override access. Three consecutive incorrect code entries shall disable lock for three minutes.

1. Designed for permanently assigned access via entry of user's four-digit code.
2. Designed for shared or temporary access by multiple users, with user-defined code to lock and unlock. Provide LED indicator to show when lock is in use.

C. Frameless Hinges (European Type): Fully concealed, self-closing, nickel-plated steel, with not less than 125 degrees of opening.

1. Provide two hinges for doors 36 inches high and less.

D. Accessible Handle: Metal, fixed, graspable lever handle and rose trim; surface mounted.

E. Hooks: Manufacturer's standard, ball-pointed aluminum or steel; chrome finished. Attach hooks with at least two fasteners.

1. Provide hooks as indicated on Drawings.
2. Provide two single-prong wall hooks for each compartment of triple-tier lockers.

F. Exposed Hardware Finishes: Satin chrome unless otherwise indicated.

## 2.06 ACCESSORIES

A. Number Plates: 1-1/2-inch- diameter, etched, embossed, or stamped, plates with black numbers and letters at least 1/2 inch high. Identify lockers in sequence indicated on Drawings.



## 2.08 FABRICATION

- A. Fabricate each locker with shelves, an individual door and frame, an individual top, a bottom, and a back, and with common intermediate uprights separating compartments.
  - 1. Fabricate lockers to dimensions, profiles, and details indicated.
  - 2. Ease edges of corners of solid-wood members to 1/16-inch radius.
- B. Fabricate components square, rigid, without warp, and with finished faces flat and free of scratches and chips. Accurately factory machine components for attachments. Make joints tight and true.
  - 1. Fabricate lockers using manufacturer's standard construction, with joints made with dowels, dados, or rabbets. Dado side panels to receive shelving except where indicated to be adjustable.
- C. Accessible Lockers: Fabricate as follows:
  - 1. Locate bottom shelf no lower than 15 inches above the floor.
  - 2. Where hooks, coat rods, or additional shelves are provided, locate no higher than 48 inches above the floor.
- D. Number Plates: Inlay number plates flush in each locker door, near top, centered.
- E. Complete fabrication, including assembly, finishing, and hardware application, to maximum extent possible, before shipment to Project site. Disassemble components only as necessary for shipment and installation. Where necessary for fitting at site, provide ample allowance for scribing, trimming, and fitting.
  - 1. Trial fit assemblies at fabrication shop that cannot be shipped completely assembled. Install dowels, screws, bolted connectors, and other fastening devices that can be removed after trial fitting. Verify that various parts fit as intended, and check measurements of assemblies against field measurements indicated on Shop Drawings before disassembling for shipment.

- F. Shop cut openings, to maximum extent possible, to receive hardware, electrical work, and similar items. Locate openings accurately and use templates or roughing-in diagrams to produce accurately sized and shaped openings. Sand edges of cutouts to remove splinters and burrs.
- G. Attach PVC edging to panels by thermally fusing edging to panels after panel fabrication.

### PART 3 - EXECUTION

#### 3.01 EXAMINATION

- A. Examine walls, floors, and support bases, with Installer present, for compliance with requirements for installation tolerances and other conditions affecting performance of the Work.
- B. Verify that furring is attached to concrete and masonry walls that are to receive lockers.
- C. Proceed with installation only after unsatisfactory conditions have been corrected.

#### 3.02 PREPARATION

- A. Condition lockers to average prevailing humidity conditions in installation areas before installation.
- B. Before installing lockers, examine factory-fabricated work for completeness and complete work as required, including removal of packing.

#### 3.03 INSTALLATION

- A. Install wood support base.
- B. Install lockers level, plumb, and true; use concealed shims.
- C. Connect groups of lockers together with manufacturer's standard fasteners, through predrilled holes, with no exposed fasteners on face frames. Fit lockers accurately together to form flush, tight, hairline joints.
- D. Install lockers without distortion so doors and drawers fit openings properly and are accurately aligned. Adjust hardware to center doors and drawers in openings, providing unencumbered operation. Complete installation of hardware and accessory items as indicated.
  - 1. Installation Tolerance: No more than 1/8 inch in 96-inch sag, bow, or other variation from a straight line. Shim as required with concealed shims.
- E. Locker Anchorage: Fasten wood lockers through back, near top and bottom, at ends with No. 8 flush-head wood screws sized for 1-inch penetration into wood framing, blocking, or furring and spaced not more than 16 inches o.c.
- F. Scribe and cut corner and filler panels to fit adjoining work using fasteners concealed where practical. Repair damaged finish at cuts.

- G. Attach sloping-top units to lockers, with end panels covering exposed ends.
- H. Install number plates after lockers are in place.
  - 1. Attach number plate on each locker door, near top, centered, with at least two screws with finish matching number plate.

#### 3.04 ADJUSTING, CLEANING, AND PROTECTION

- A. Clean, lubricate, and adjust hardware. Adjust doors to operate easily without binding. Verify that integral locking devices operate properly.
- B. Protect lockers from damage, abuse, dust, dirt, stain, or paint. Do not permit use during construction.
- C. Touch up marred finishes, or replace lockers that cannot be restored to factory-finished appearance. Use only materials and procedures recommended or furnished by locker manufacturer.

#### 3.05 CONSTRUCTION WASTE MANAGEMENT AND DISPOSAL

- A. Manage construction waste in accordance with provisions of Section 01 74 19 "Construction Waste Management and Disposal."

**END OF SECTION 10 51 23**